



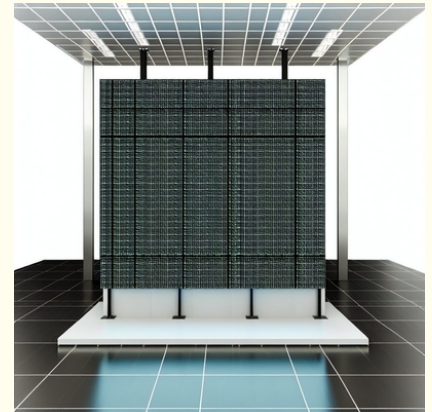
Indoor Advertising LED Display Screen Hanging/Standing Installation 14 Bits-16 Bits Gray Level for Customer Requirements

Our Product Introduction

for more products please visit us on sol-colur.com

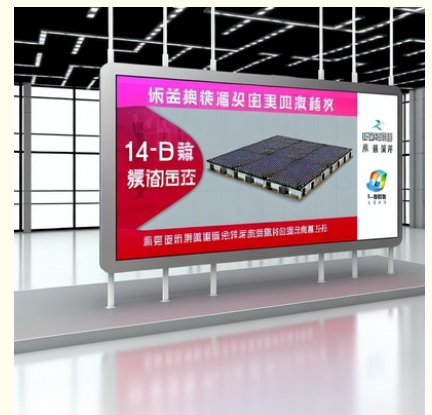
Basic Information

- Place of Origin: China
- Brand Name: Sol-colur
- Certification: CE/FCC/ROHS/ISO
- Minimum Order Quantity: 1sqm
- Price: Negotiated
- Packaging Details: Flight case, Wooden case
- Delivery Time: 10 working days after receiving deposit
- Payment Terms: L/C, T/T
- Supply Ability: 5000sqm/month

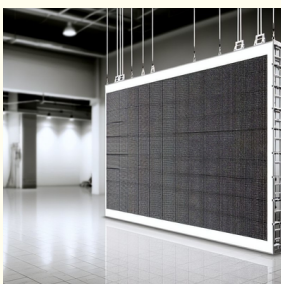


Product Specification

- Power Consumption: Max 800W/sqm
- Protection: IP40 / IP21
- Cabinet Material: Die-cast Aluminum
- Warranty: 3 Years
- Color Temperature: 6500K
- Gray Level: 14 Bits-16 Bits
- Maintenance Method: Back Maintenance
- Pixel Density: 147456 Dot/



More Images



Product Description

Product Description:

Introducing our innovative Rental LED Display Screen, a top-of-the-line solution for your visual display needs. This cutting-edge display screen boasts a remarkable pixel density of 147456 Dot/ , ensuring stunning clarity and detail in every image or video displayed. Perfect for a wide range of applications, from indoor advertising to event showcases, this Creative LED Display Screen is designed to captivate your audience and leave a lasting impression.

One of the standout features of this Indoor Full Color LED Display Screen is its back maintenance method, which simplifies upkeep and ensures seamless operation. With easy access to the rear of the screen for maintenance tasks, you can keep your display in peak condition with minimal effort, saving you time and resources in the long run.

The color temperature of this LED display screen is set at a vibrant 6500K, delivering vivid and true-to-life colors that pop off the screen. Whether you're showcasing dynamic visuals or eye-catching graphics, the color accuracy of this display ensures that your content appears exactly as intended, making a lasting impact on viewers.

Designed for versatility and convenience, the screen dimension of this Indoor Advertising LED Display Screen measures 500x500mm, providing a spacious canvas for your content while maintaining a sleek and compact form factor. Whether you're setting up a temporary display at an event or creating a permanent fixture in a retail setting, this screen size strikes the perfect balance between visibility and space efficiency.

Constructed with high-quality materials, the cabinet of this LED display screen is made from durable die-cast aluminum, combining lightweight design with robust durability. This ensures that your display is not only visually striking but also built to withstand the rigors of frequent use, making it a reliable investment for your display needs.

In conclusion, our Rental LED Display Screen offers a comprehensive solution for businesses and organizations looking to elevate their visual presentations. With a focus on quality, performance, and user-friendly maintenance, this Creative LED Display Screen is a versatile and reliable choice for indoor advertising, event displays, and more. Experience the power of vivid visuals and seamless operation with this Indoor Full Color LED Display Screen, designed to make a lasting impact on your audience.

Features:

Product Name: Rental LED Display Screen

Protection: IP40 / IP21

Maintenance Method: Back Maintenance

Life Span: 100000 hours

Advantage: Whisper-quiet Operation

Cabinet Weight: 7.5kg

Technical Parameters:

Advantage	Whisper-quiet Operation
Resolution	192x192
Screen Dimension	500x500mm
Installation	Hanging/Standing
Color Temperature	6500K
Maintenance Method	Back Maintenance
Warranty	3 Years
Protection	IP40 / IP21
Gray Level	14 Bits-16 Bits
Cabinet Weight	7.5kg

Applications:

Sol-colour Rental LED Display Screen is a versatile and high-quality product suitable for various Product Application Occasions and Scenarios. With its exceptional attributes and features, this Indoor Full Color LED Display Screen from Sol-colour is a top choice for businesses and organizations looking to enhance their visual displays.

One of the key application scenarios for the Sol-colour Rental LED Display Screen is in indoor events and exhibitions. Its high resolution and vibrant colors make it perfect for showcasing products, services, and information in a dynamic and engaging way. Whether it's a trade show, conference, or product launch, this LED display screen will attract attention and leave a lasting impression on attendees. Another popular application for the Sol-colour Rental LED Display Screen is as a Car LED Advertising Screen. With its ability to deliver bright and clear content, this display screen is ideal for advertising on vehicles such as buses, taxis, and trucks. The high-quality visuals ensure that the advertising message is effectively communicated to a wide audience, making it a valuable marketing tool for businesses in the transportation industry.

Thanks to its durable construction and reliable performance, the Sol-colour Rental LED Display Screen is also widely used in outdoor events and concerts. Its weatherproof design and high brightness make it suitable for outdoor use, providing excellent visibility even in

bright sunlight. Whether it's a music festival, sports event, or public gathering, this LED display screen will ensure that the content is displayed beautifully and clearly to the audience.

With certifications such as CE, FCC, ROHS, and ISO, customers can trust the quality and safety of the Sol-colour Rental LED Display Screen. The minimum order quantity of 1sqm, flexible pricing, and various packaging options including flight case and wooden case make it convenient for businesses of all sizes. Additionally, the fast delivery time of 10 working days and payment terms of L/C and T/T ensure a smooth and efficient purchasing process.

Overall, the Sol-colour Rental LED Display Screen is a reliable and versatile product that meets the diverse needs of different industries. Its advanced features, high performance, and long warranty period of 3 years make it a cost-effective investment for businesses looking to enhance their visual communications.



SHENZHEN SOL COLUR DISPLAY CO.,LTD



+86 19860878327



cg-01@sol-colour.com



sol-colour.com

2nd Floor, Building 8, Nangang Third Industrial Zone, TangtouCommunity, Shiyan Street, Bao'an District,
Shenzhen