

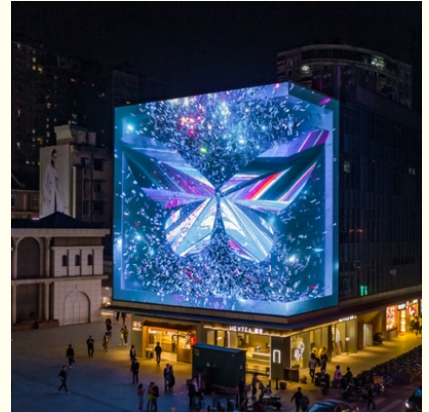


140° Wide Viewing Angle 3D LED Display Board P8 Outdoor Led Screen Waterproofing

Our Product Introduction

Basic Information

- Place of Origin: China
- Brand Name: Sol-colur
- Certification: CE/FCC/ROHS/ISO
- Model Number: P8
- Minimum Order Quantity: 1pcs
- Price: Negotiated
- Packaging Details: Carton box, Wooden case
- Delivery Time: 10 working days after receiving deposit
- Payment Terms: L/C, T/T
- Supply Ability: 5000sqm/month



Product Specification

- Module Size: 480x320mm
- Cabinet Size: 960x960mm
- Cabinet Weight: 28kg/
- Cabinet Material: Profile Aluminum
- LEDs Brand: Nationstar/Kinglight/Mulinsen/Specified
- Refresh Rate: 3840Hz - 7680Hz
- Brightness: $\geq 6500\text{nits}$
- Max. Power Consumption: 650W/
- Ave. Power Consumption: 220W/
- Gray Level: 14bits - 16bits
- Viewing Distance: $\geq 5\text{m}$
- Protection Level: IP65
- Operating Voltage: AC110V/220V $\pm 10\%$
- Highlight: **P8 Outdoor Led Screen Waterproofing, Waterproofing 3D LED Display Board, 140° Wide Viewing Angle 3D LED Display Board**



for more products please visit us on sol-colur.com

Product Description

P8 Naked Eye Glasses 140° Viewing Angle Profile Aluminum 3D LED Advertising Screen Display

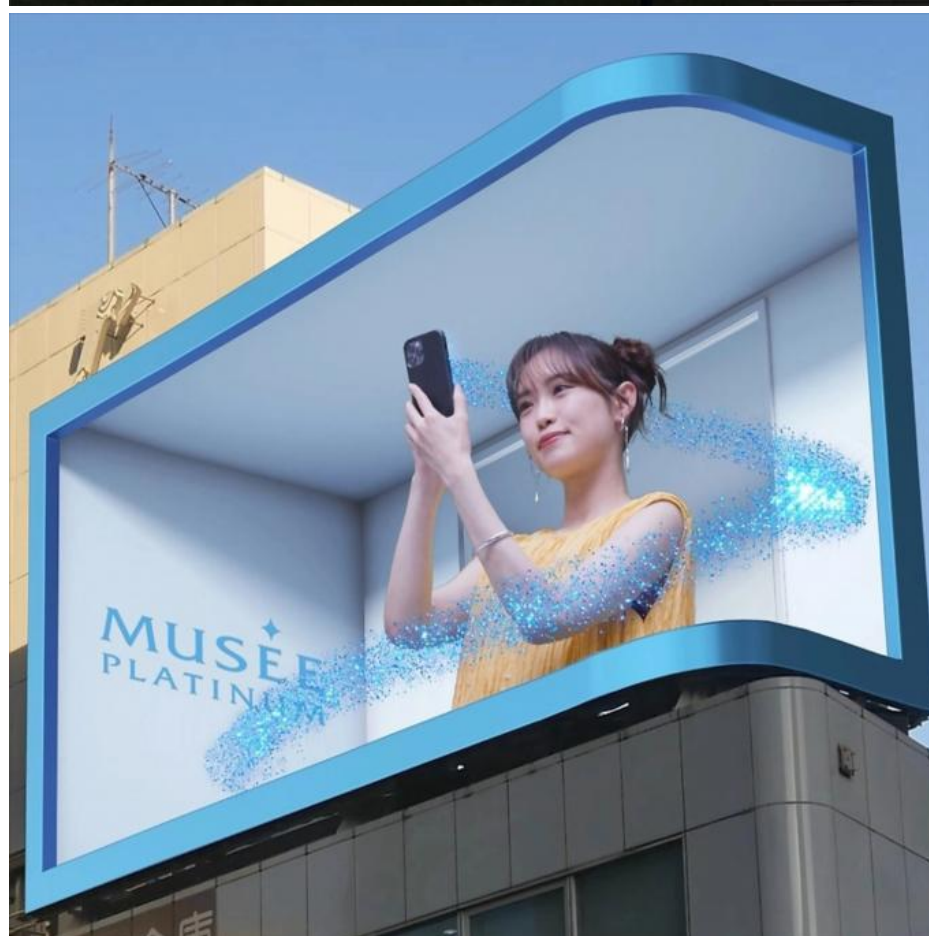
Product features:

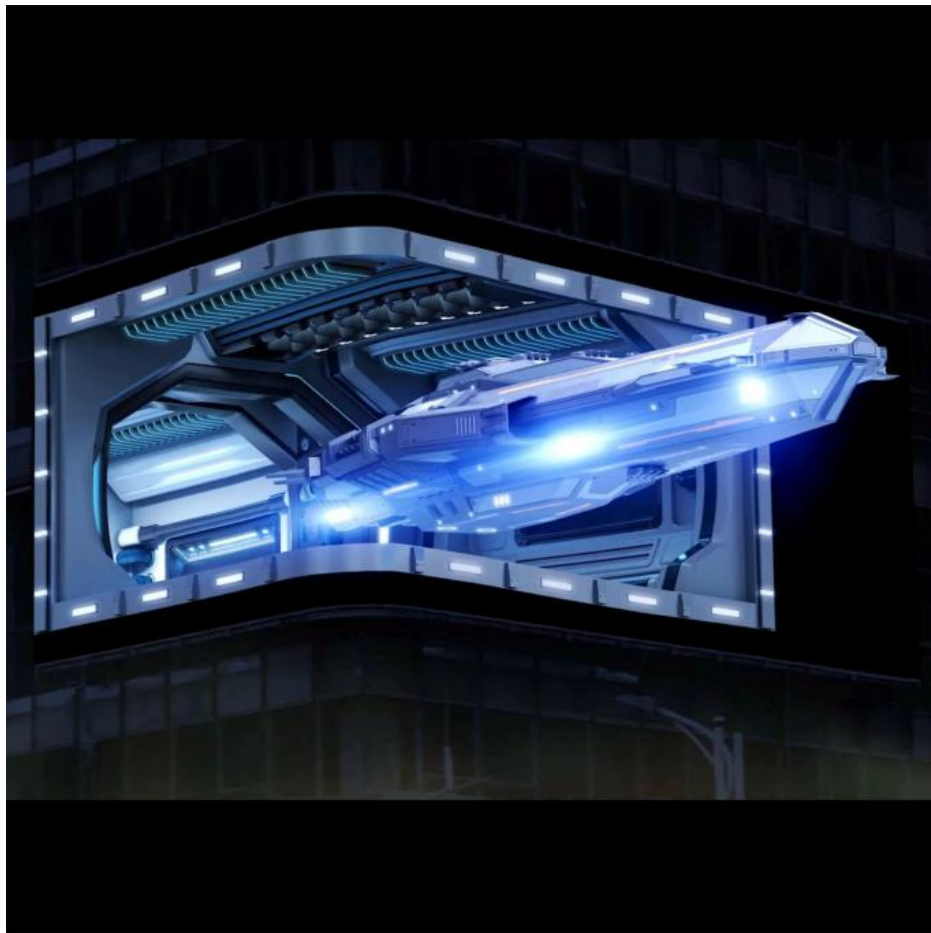
1. The voltage divider power supply design has an average power consumption of up to 220W and more than 6500nit.
2. High brightness, environmental protection and energy-saving.
3. 140°(H/V) ultra-wide viewing angle; It can be spliced at right angles and arcs, and it is easy to achieve naked-eye 3D.
4. High brim mask design, good ink color consistency, high contrast, up to 9500:1.
5. The colors are rich and delicate; The picture is clear and natural.
6. High-strength anti-aging fabric, IP65 protection level: die-cast aluminum bottom shell, high heat dissipation ribs.
7. The design has good heat dissipation performance and prolongs the service life of the screen.

Product technical specifications:

Item	Parameter
Model	P8
Pixel pitch	8mm
LEDs	SMD2727
Module size	480x320mm
Module resolution	60x40 dots
Cabinet size	960x960x77mm
Cabinet resolution	120x120 dots
Cabinet material	Profile Aluminum
Cabinet weight	28kg
Maintenance methods	Front
Brightness	≥6500 cd/
Refresh rate	3840Hz-7680Hz
Gray level	14bits-16bits
Scan mode	1/4 scan
Viewing angle	140°/140°
Viewing distance	≥5m
Max. power consumption	650W/
Ave. power consumption	220W/
Input signal	DVI, VGA, HDMI, HDSDI
Operating temperature	-20-60°C
Operating humidity	10-90% RH
Operating voltage	AC 110V / 220V ±10%

Reference pictures:





SOL COLUR SHENZHEN SOL COLUR DISPLAY CO.,LTD



+86 13751136904



chenhao@sol-colour.com



sol-colur.com

2nd Floor, Building 8, Nangang Third Industrial Zone, TangtouCommunity, Shiyan Street, Bao'an District,
Shenzhen