

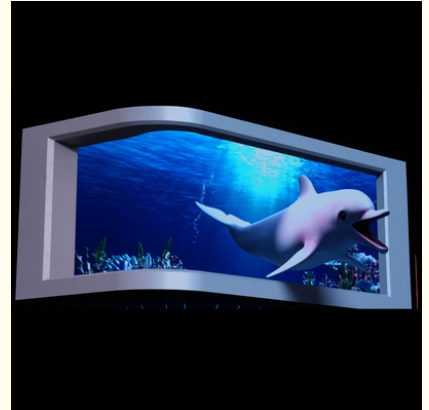


## P5.7 P6.67 3D LED Advertising Display Large Outdoor Led Display Screens

Our Product Introduction

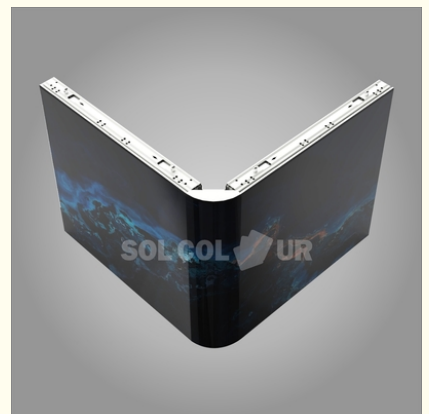
### Basic Information

- Place of Origin: China
- Brand Name: Sol-colur
- Certification: CE/FCC/ROHS/ISO
- Model Number: P5.7/P6.67/P8/P10
- Minimum Order Quantity: 1pcs
- Price: Negotiated
- Packaging Details: Carton box, Wooden case
- Delivery Time: 10 working days after receiving deposit
- Payment Terms: L/C, T/T
- Supply Ability: 5000sqm/month



### Product Specification

- Module Size: 480x320mm
- Cabinet Size: 960x960mm
- Cabinet Weight: 28kg/
- Cabinet Material: Profile Aluminum
- LEDs Brand: Nationstar/Kinglight/Mulinsen/Specified
- Refresh Rate: 3840Hz - 7680Hz
- Brightness:  $\geq 6500$ nits
- Max. Power Consumption: 650W/
- Ave. Power Consumption: 200-220W/
- Gray Level: 14bits - 16bits
- Viewing Distance:  $\geq 5$ m
- Protection Level: IP65
- Operating Voltage: AC110V/220V $\pm 10\%$
- Highlight: **P6.67 3D LED Advertising Display ,  
P5.7 3D LED Advertising Display ,  
P5.7 Large Outdoor Led Display Screen**



### More Images



for more products please visit us on [sol-colur.com](http://sol-colur.com)

## Product Description

### Naked Eye Glasses - free 3D LED Advertising Screen Profile Aluminum Large Outdoor LED Display

#### Product features:

1. The voltage divider power supply design has an average power consumption of up to 200W and more than 6500nit.
2. High brightness, environmental protection and energy-saving.
3. 140°(H/V) ultra-wide viewing angle; It can be spliced at right angles and arcs, and it is easy to achieve naked-eye 3D.
4. High brim mask design, good ink color consistency, high contrast, up to 9500:1.
5. The colors are rich and delicate; The picture is clear and natural.
6. High-strength anti-aging fabric, IP65 protection level: die-cast aluminum bottom shell, high heat dissipation ribs.
7. The design has good heat dissipation performance and prolongs the service life of the screen.

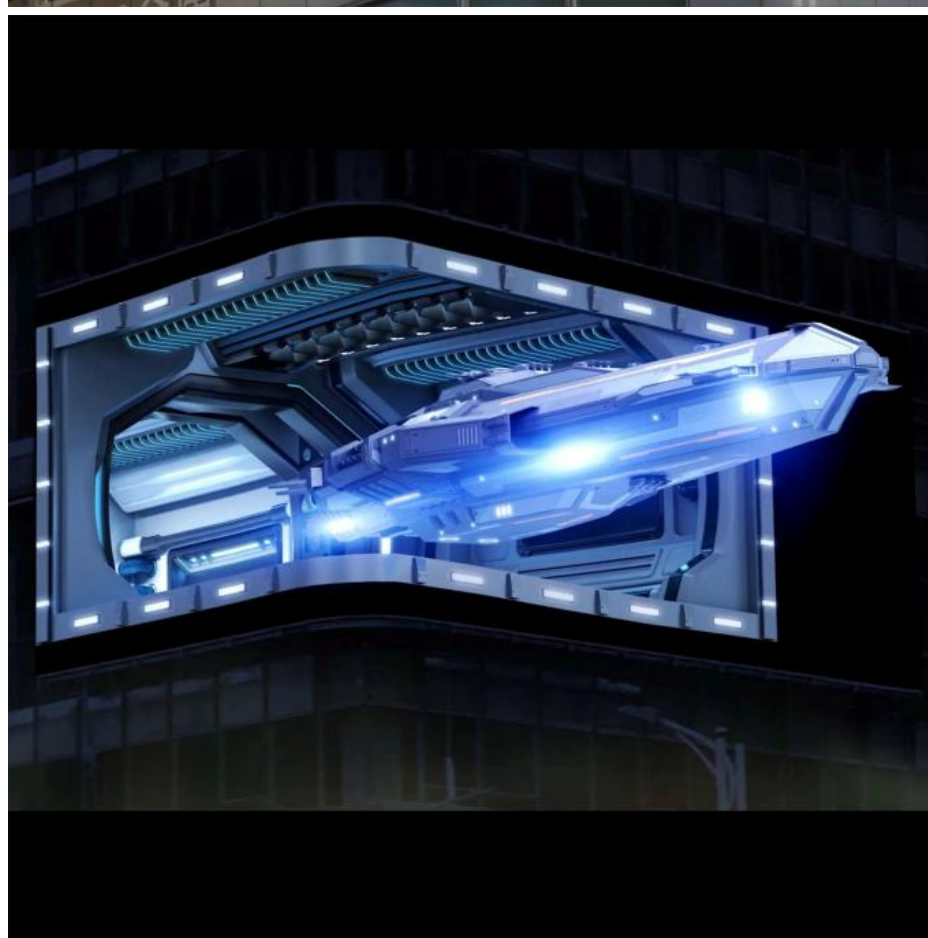
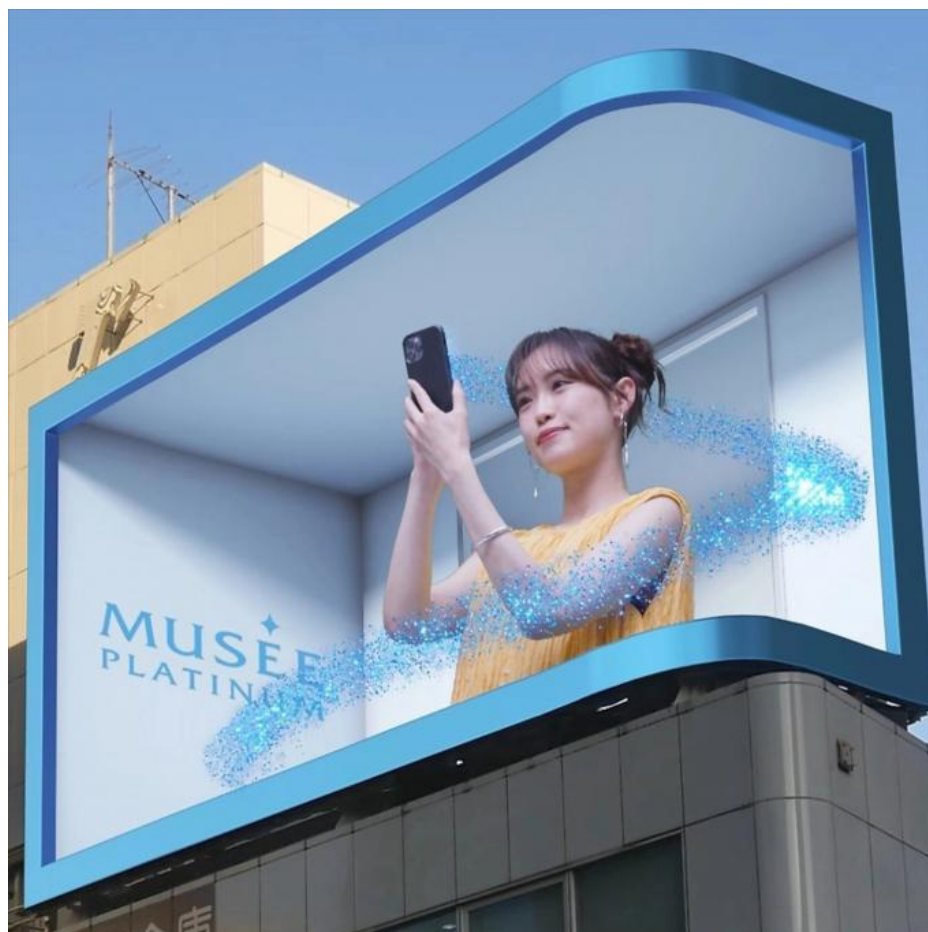
#### Product technical specifications:

Parameter				
Model	P5.7	P6.67	P8	P10
Pixel pitch	5.71mm	6.67mm	8mm	10mm
LEDs	SMD2727	SMD2727	SMD2727	SMD2727
Module size	480x320mm			
Module resolution	84x56 dots	72x48 dots	60x40 dots	48x32 dots
Cabinet size	960x960x77mm			
Cabinet resolution	168x168 dots	144x144 dots	120x120 dots	96x96 dots
Cabinet material	Profile Aluminum			
Cabinet weight	28kg			
Maintenance methods	Front			
Brightness	≥6500 cd/	≥6500 cd/	≥6500 cd/	≥6500 cd/
Refresh rate	3840Hz-7680Hz	3840Hz-7680Hz	3840Hz-7680Hz	3840Hz-7680Hz
Gray level	14bits-16bits	14bits-16bits	14bits-16bits	14bits-16bits
Scan mode	1/7 scan	1/6 scan	1/4 scan	1/2 scan
Viewing angle	140°/140°			
Viewing distance	≥5m			
Max. power consumption	650W/	650W/	650W/	600W/
Ave. power consumption	220W/	220W/	220W/	200W/
Input signal	DVI, VGA, HDMI, HDSDI			
Operating temperature	-20-60℃			

Operating humidity	10-90% RH
Operating voltage	AC 110V / 220V ±10%

Reference pictures:







+86 13751136904



chenhao@sol-colour.com



sol-colour.com

2nd Floor, Building 8, Nangang Third Industrial Zone, TangtouCommunity, Shiyan Street, Bao'an District,  
Shenzhen