

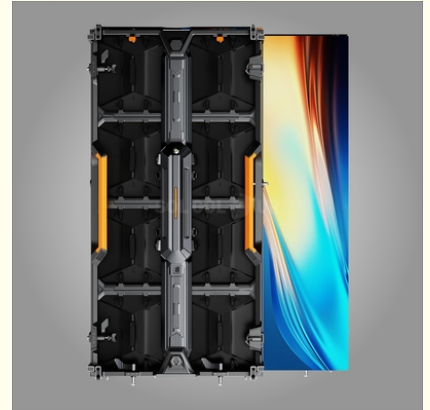
250*250mm Module Design Front Maintenance Led Display For Rental IP65

Our Product Introduction

for more products please visit us on sol-colur.com

Basic Information

- Place of Origin: China
- Brand Name: Sol-colur
- Certification: CE/FCC/ROHS/ISO
- Model Number: P2.84/P3.91/P4.81
- Minimum Order Quantity: 1sqm
- Price: Negotiated
- Packaging Details: Flight case, Wooden case
- Delivery Time: 10 working days after receiving deposit
- Payment Terms: L/C, T/T
- Supply Ability: 5000sqm/month



Product Specification

- LEDs Brand: Nationstar/Kinglight/Ruisheng/Mulinsen/speci
- Refresh Rate: 3840Hz-7680Hz
- Brightness: ≥ 4000 Cd/m²
- Maintenance Methods: Rear & Front
- Module Size: 250*250mm
- Cabinet Size: 500*1000mm
- Cabinet Material: Die Casting Aluminum
- Cabinet Weight: 6.9 Kg
- Protection Level: IP65
- Max. Power Consumption: ≤ 630 W/
- Ave. Power Consumption: ≤ 220 W/
- Gray Level: 14 Bits-16 Bits
- Installation: Hanging/ Ground
- Highlight: 250*250mm Front Maintenance Led Display ,
Module Design Led Display For Rental ,
250*250mm front maintenance led display



Product Description

Outdoor LED Screen HUB Connecting 500x1000mm Die Casting Aluminum Cabinet

Product features:

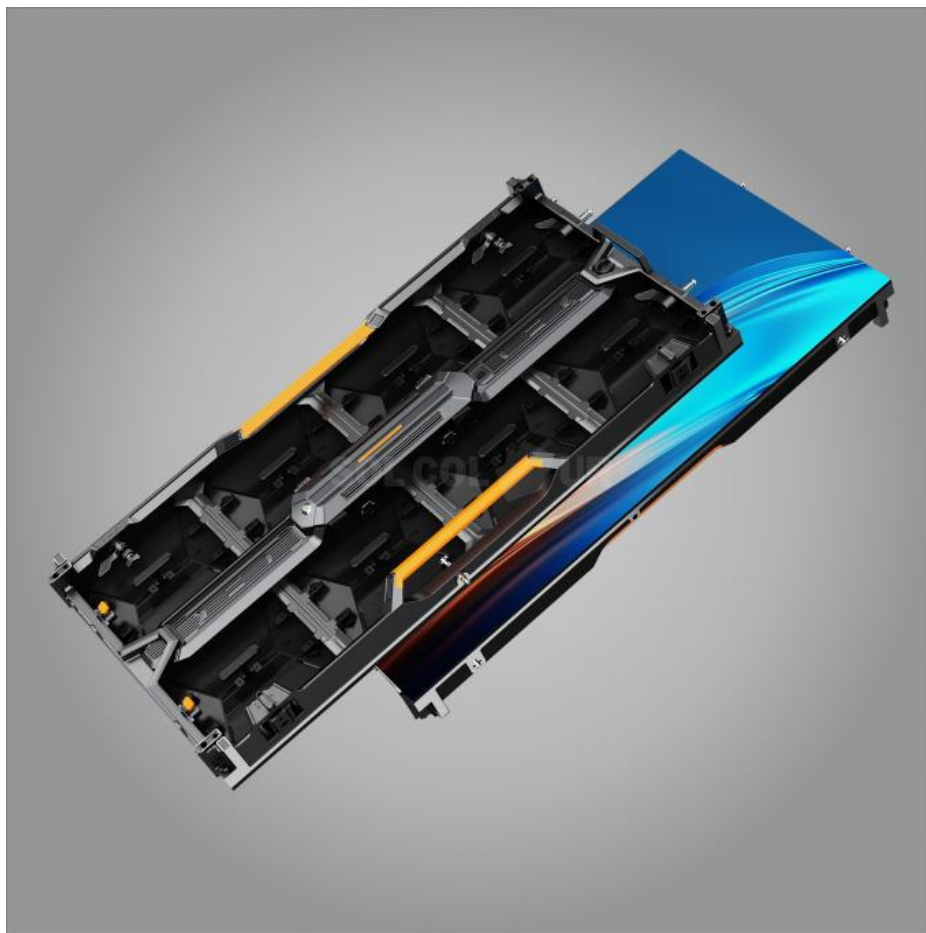
1. Self-developed private model products, modular design, support rear/front maintenance.
2. Featuring a humanized arc lock design, it supports both straight and curved screens, catering to diverse customer requirements for flexible screen assembly.
3. With multiple protections in place, maintenance is minimized. The thin, die-cast aluminum housing offers high toughness, precision, and durability against deformation.
4. The average power consumption reaches just 220W, making it both energy-saving and eco-friendly.
5. Ultra-wide 120-degree field of view.
6. With RGB low grayscale processing, the colors are vibrant and nuanced, delivering sharp and natural visuals.
7. The HUB connection is suitable for rental, uses screwless fixing, and is easy and quick to disassemble and install.

Product technical specifications:

Item	Parameter	Specification		
Module parameters	Pitch	2.84mm	3.91mm	4.81mm
	LEDs	SMD1415	SMD1921	
	Lead wire	Copper		
	Module resolution	88*88 dots	64*64 dots	52*52 dots
	Module size ± tolerances	249.90±0.1(V)* 249.90±0.1(H)*17.9±0.5(D)		
	Module weight ± tolerances	≤0.68 KGS	≤0.64 KGS	≤0.60 KGS
	Pixel density	123904 dots/	65536 dots/	43264 dots/
Cabinet parameters	Cabinet size ± tolerances	499.9(±0.1)(H)*999.9(±0.1)(V)* 76(±0.2)(D)		
	Cabinet flatness	≤1.0mm		
	Cabinet material	Die casting aluminum		
	Cabinet weight ± tolerance	≤6.9 KGS		
Cabinet parameters of screen	Module quantity for 1 cabinet	2*4=8 PCS		
	Cabinet resolution	176*352 dots	128*256 dots	104*208 dots
	Cabinet + Module size ± tolerance	499.9(±0.1)(H)*999.9(±0.1)(V)*85(±0.2)(D)		
	Cabinet + Module weight ± tolerance	13 KGS		
	Maintenance methods	Rear/Front		
	Flatness	≤1.0mm		
	Screen seams	≤1.0mm		
Optical parameters	Pixel-by-pixel brightness correction	Support		
	Pixel-by-pixel chromaticity correction	Support		
	White balance brightness	≥4000 cd/m2		
	Color temperature	3000K-15000K		

	Horizontal viewing angle	≥120°		
	Vertical viewing angle	≥110°		
	Viewing distance(=PITCH*1)	≥3m		≥4m
Electrical parameters	Max. power consumption of cabinet	≤200 W		
	Ave. power consumption	≤220W/		
	Max. power consumption	≤630W/		
	Power supply requirements	220-240V AC		
Processing performance	Scan	22S	16S	13S
	Frame rate	50-60Hz		
	Refresh rate	3840Hz-7680Hz		
	Drive mode	Constant current		
	Grayscale	14bits - 16bits		
Control system	Control method	Ethernet port		
	Control the distance	Cat5e Unshielded Twisted Pai		
	Signal input	HDMI,DVI		
	Brightness adjust	Manual/automatic/remote control		
Operational parameters	Continuous working hours	≥ 5000hrs		
	Mean time between failures	≥ 5000hrs		
	Discrete out-of-control points	0 before shipping		
	Continuous runaway points	0		
	Blind spot rate	0 before shipping		
	Screen temperature rise	≤ 65℃		
Usage parameters	Typical life values	50000hrs		
	Lamp temperature	≤60°		
	Operating temperature	-10°~50°		
	Storage temperature	-20°~50°		
	Operating humidity	10~65%RH no condensation		
	Storage humidity	10~65%RH no condensation		
Protection	Protection level	IP65		

Reference pictures:



2nd Floor, Building 8, Nangang Third Industrial Zone, TangtouCommunity, Shiyan Street, Bao'an District,
Shenzhen