

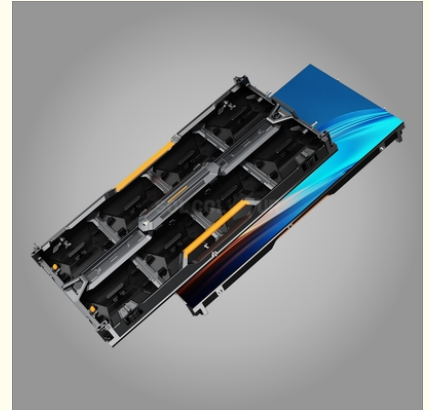


P2.84 Exhibitions Outdoor Rental LED Screen 500x1000mm Wide Viewing Angle

Our Product Introduction

Basic Information

- Place of Origin: China
- Brand Name: Sol-colur
- Certification: CE/FCC/ROHS/ISO
- Model Number: P2.84
- Minimum Order Quantity: 1sqm
- Price: Negotiated
- Packaging Details: Flight case, Wooden case
- Delivery Time: 10 working days after receiving deposit
- Payment Terms: L/C, T/T
- Supply Ability: 5000sqm/month



Product Specification

- LEDs Brand: Nationstar/Kinglight/Ruisheng/Mulinsen/speci
- Refresh Rate: 3840Hz-7680Hz
- Brightness: ≥ 4000 Cd/m²
- Scan Mode: 1/22 Scan
- Maintenance Methods: Rear & Front
- Module Size: 250*250mm
- Cabinet Size: 500*1000mm
- Cabinet Material: Die Casting Aluminum
- Cabinet Weight: 6.9 Kg
- Protection Level: IP65
- Max. Power Consumption: ≤ 630 W/
- Ave. Power Consumption: ≤ 220 W/
- Gray Level: 14 Bits-16 Bits
- Installation: Hanging/ Ground
- Highlight: Exhibitions Outdoor Rental LED Screen,



Product Description

Product features:

1. Self-developed private model products, modular design, support rear/front maintenance.
2. With a user-friendly arc lock design, it is compatible with both straight and curved screens, satisfying the varied needs of customers for flexible screen assembly.
3. With multiple protections in place, maintenance is minimized. The thin, die-cast aluminum housing offers high toughness, precision, and durability against deformation.
4. Consuming an average of only 220W, it promotes both energy savings and environmental sustainability.
5. 120 degree super wide viewing angle.
6. With RGB deep grayscale processing, the colors are rich and nuanced, producing sharp and natural picture quality.
7. Screwless fixing on the HUB connection makes it ideal for rental use, allowing for quick and convenient installation and takedown.

Product technical specifications:

Item	Parameter	Specification
Module parameters	Pitch	2.84mm
	LEDs	SMD1415
	Lead wire	Copper
	Module resolution	88*88 dots
	Module size ± tolerances	249.90±0.1(V)* 249.90±0.1(H)*17.9±0.5(D)
	Module weight ± tolerances	≤0.68 KGS
	Pixel density	123904 dots/
Cabinet parameters	Cabinet size ± tolerances	499.9(±0.1)(H)*999.9(±0.1) (V)* 76(±0.2)(D)
	Cabinet flatness	≤1.0mm
	Cabinet material	Die casting aluminum
	Cabinet weight ± tolerance	≤6.9 KGS
Cabinet parameters of screen	Module quantity for 1 cabinet	2*4=8 PCS
	Cabinet resolution	176*352 dots
	Cabinet + Module size ± tolerance	499.9(±0.1)(H)*999.9(±0.1) (V)*85(±0.2)(D)
	Cabinet + Module weight ± tolerance	13 KGS
	Maintenance methods	Rear/Front
	Flatness	≤1.0mm
	Screen seams	≤1.0mm
	Pixel-by-pixel brightness correction	Support

Optical parameters	Pixel-by-pixel chromaticity correction	Support
	White balance brightness	≥4000 cd/m2
	Color temperature	3000K-15000K
	Horizontal viewing angle	≥120°
	Vertical viewing angle	≥110°
	Viewing distance(=PITCH*1)	≥3m
Electrical parameters	Max. power consumption of cabinet	≤200 W
	Ave. power consumption	≤220W/
	Max. power consumption	≤630W/
	Power supply requirements	220-240V AC
Processing performance	Scan	22S
	Frame rate	50-60Hz
	Refresh rate	3840Hz-7680Hz
	Drive mode	Constant current
	Grayscale	14bits - 16bits
Control system	Control method	Ethernet port
	Control the distance	Cat5e Unshielded Twisted Pair
	Signal input	HDMI,DVI
	Brightness adjust	Manual/automatic/remote control
Operational parameters	Continuous working hours	≥ 5000hrs
	Mean time between failures	≥ 5000hrs
	Discrete out-of-control points	0 before shipping
	Continuous runaway points	0
	Blind spot rate	0 before shipping
	Screen temperature rise	≤ 65°C
Usage parameters	Typical life values	50000hrs
	Lamp temperature	≤60°
	Operating temperature	-10°~50°
	Storage temperature	-20°~50°
	Operating humidity	10~65%RH no condensation

	Storage humidity	10~65%RH no condensation
Protection	Protection level	IP65
Certification	CE/FCC/ROHS/ISO	/

Reference pictures:



SOL COLUR SHENZHEN SOL COLUR DISPLAY CO.,LTD

+86 13751136904

chenhao@sol-colour.com

sol-colour.com

2nd Floor, Building 8, Nangang Third Industrial Zone, TangtouCommunity, Shiyao Street, Bao'an District, Shenzhen

