

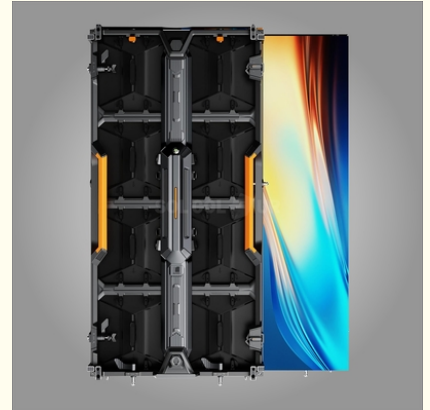


P2.84 Indoor LED Screen Hire Wireless Connection 500x1000mm Quick Installation

Our Product Introduction

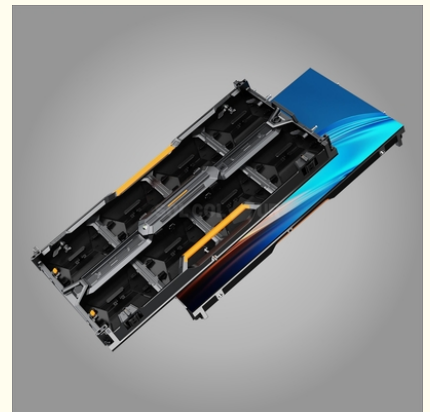
Basic Information

- Place of Origin: China
- Brand Name: Sol-colur
- Certification: CE/FCC/ROHS/ISO
- Model Number: P2.84
- Minimum Order Quantity: 1sqm
- Price: Negotiated
- Packaging Details: Flight case, Wooden case
- Delivery Time: 10 working days after receiving deposit
- Payment Terms: L/C, T/T
- Supply Ability: 5000sqm/month



Product Specification

- LEDs Brand: Nationstar/Kinglight/Ruisheng/Mulinsen/speci
- Refresh Rate: 3840Hz-7680Hz
- Brightness: ≥ 700 Cd/m²
- Scan Mode: 1/30 Scan
- Maintenance Methods: Rear & Front
- Module Size: 250*250mm
- Cabinet Size: 500*1000mm
- Cabinet Material: Die Casting Aluminum
- Cabinet Weight: 6.9 Kg
- Protection Level: IP30
- Max. Power Consumption: ≤ 430 W/
- Ave. Power Consumption: ≤ 150 W/
- Gray Level: 14 Bits-16 Bits
- Installation: Hanging/ Ground
- Highlight: **P2.84 Indoor LED Screen Hire,**



Product Description

Indoor P2.84 LED Screen Wireless Connection

500x1000mm Quick Installation IP30

Product features:

1. Self-developed private model products, modular design, support rear/front maintenance.
2. The user-friendly arc lock design is compatible with both flat and curved screens, meeting different customer demands for flexible screen splicing.
3. Multiple layers of protection reduce maintenance needs. The lightweight die-cast aluminum cabinet is strong, highly precise, and resistant to deformation.
4. With an average power consumption of only 200W, it is energy-efficient and environmentally friendly.
5. 120 degree super wide viewing angle.
6. RGB low grayscale processing provides rich, delicate colors and clear, natural image quality.
7. Disassembly and assembly are convenient and quick.

Product technical specifications:

| Item | Parameter | Specification |
|------------------------------|-------------------------------------|---|
| Module parameters | Pitch | 2.84mm |
| | LEDs | SMD1515 |
| | Lead wire | Copper |
| | Module resolution | 88*88 dots |
| | Module size ± tolerances | 249.90±0.1(V)* 249.90±0.1(H)*17.9±0.5(D) |
| | Module weight ± tolerances | ≤0.55 KGS |
| | Pixel density | 123904 dots/ |
| Cabinet parameters | Cabinet size ± tolerances | 499.9(±0.1)(H)*999.9(±0.1)(V)* 76(±0.2)(D) |
| | Cabinet flatness | ≤1.0mm |
| | Cabinet material | Die casting aluminum |
| | Cabinet weight ± tolerance | ≤6.9 KGS |
| Cabinet parameters of screen | Module quantity for 1 cabinet | 2*4=8 PCS |
| | Cabinet resolution | 176*352 dots |
| | Cabinet + Module size ± tolerance | 499.9(±0.1)(H)*999.9(±0.1)(V)*85(±0.2)(D) |
| | Cabinet + Module weight ± tolerance | 12.5 KGS |
| | Maintenance methods | Rear/Front |
| | Flatness | ≤1.0mm |
| | Screen seams | ≤1.0mm |

| | | |
|------------------------|--|---------------------------------|
| Optical parameters | Pixel-by-pixel brightness correction | Support |
| | Pixel-by-pixel chromaticity correction | Support |
| | White balance brightness | ≥700 cd/m2 |
| | Color temperature | 3000K-15000K |
| | Horizontal viewing angle | ≥120° |
| | Vertical viewing angle | ≥110° |
| | Viewing distance(=PITCH*1) | ≥3m |
| Electrical parameters | Max. power consumption of cabinet | ≤200 W |
| | Ave. power consumption | ≤150W/ |
| | Max. power consumption | ≤430W/ |
| | Power supply requirements | 220-240V AC |
| Processing performance | Scan | 30S |
| | Frame rate | 50-60Hz |
| | Refresh rate | 3840Hz-7680Hz |
| | Drive mode | Constant current |
| | Grayscale | 14bits - 16bits |
| Control system | Control method | Ethernet port |
| | Control the distance | Cat5e Unshielded Twisted Pair |
| | Signal input | HDMI,DVI |
| | Brightness adjust | Manual/automatic/remote control |
| Operational parameters | Continuous working hours | ≥ 5000hrs |
| | Mean time between failures | ≥ 5000hrs |
| | Discrete out-of-control points | 0 before shipping |
| | Continuous runaway points | 0 |
| | Blind spot rate | 0 before shipping |
| | Screen temperature rise | ≤ 65°C |
| Usage parameters | Typical life values | 50000hrs |
| | Lamp temperature | ≤60° |
| | Operating temperature | -10°~50° |
| | Storage temperature | -20°~50° |
| | | |

| | | |
|---------------|--------------------|--------------------------|
| | Operating humidity | 10~65%RH no condensation |
| | Storage humidity | 10~65%RH no condensation |
| Protection | Protection level | IP30 |
| Certification | CE/FCC/ROHS/ISO | / |

Reference pictures:



SOL COLUR SHENZHEN SOL COLUR DISPLAY CO.,LTD

+86 13751136904

chenhao@sol-colour.com

sol-colour.com

2nd Floor, Building 8, Nangang Third Industrial Zone, TangtouCommunity, Shiyan Street, Bao'an District,

