

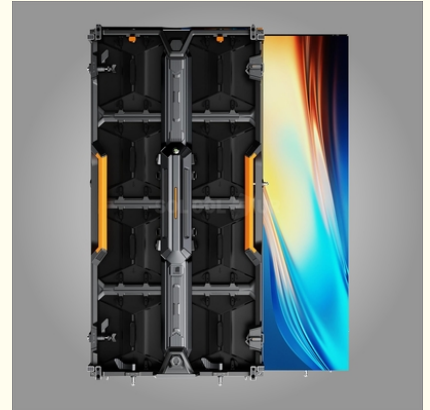


IP30 Indoor Rental LED Screen P2.604mm Modular Led Display 500x1000mm

Our Product Introduction

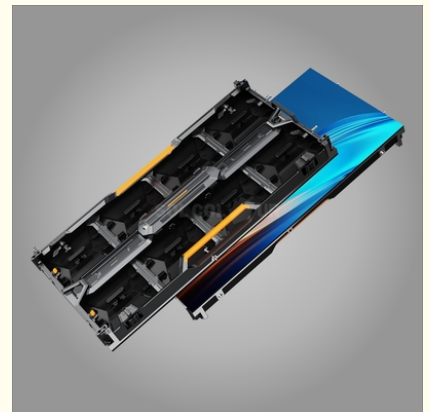
Basic Information

- Place of Origin: China
- Brand Name: Sol-colur
- Certification: CE/FCC/ROHS/ISO
- Model Number: P2.604
- Minimum Order Quantity: 1sqm
- Price: Negotiated
- Packaging Details: Flight case, Wooden case
- Delivery Time: 10 working days after receiving deposit
- Payment Terms: L/C, T/T
- Supply Ability: 5000sqm/month



Product Specification

- LEDs Brand: Nationstar/Kinglight/Ruisheng/Mulinsen/speci
- Refresh Rate: 3840Hz-7680Hz
- Brightness: ≥ 700 Cd/m²
- Scan Mode: 1/32 Scan
- Maintenance Methods: Rear & Front
- Module Size: 250*250mm
- Cabinet Size: 500*1000mm
- Cabinet Material: Die Casting Aluminum
- Cabinet Weight: 6.9 Kg
- Protection Level: IP30
- Max. Power Consumption: ≤ 470 W/
- Ave. Power Consumption: ≤ 165 W/
- Gray Level: 14 Bits-16 Bits
- Installation: Hanging/ Ground
- Highlight: Indoor Rental LED Screen 2.604mm ,



Product Description

Indoor P2.604 LED Screen Modular Design 500x1000mm Die Casting Aluminum with High Gray Scale

Product features:

1. Modular design, self-developed private model products, support rear/front maintenance.
2. The humanized arc lock design can be compatible with straight and curved screens to meet different customers' needs for flexible screen splicing.
3. Featuring multiple protections, the thin die-cast aluminum housing ensures reduced maintenance, strong toughness, high precision, and resistance to deformation.
4. With an average power consumption of only 165W, it is energy-efficient and environmentally friendly.
5. 120° ultra-wide viewing angle.
6. RGB deep grayscale processing ensures rich and refined colors, resulting in crisp and lifelike image quality.
7. The HUB connection, designed for rentals, features a screwless fixing system that makes installation and removal both quick and simple.

Product technical specifications:

Item	Parameter	Specification
Module parameters	Pitch	2.604mm
	LEDs	SMD1515
	Lead wire	Copper
	Module resolution	96*96 dots
	Module size ± tolerances	249.90±0.1(V)* 249.90±0.1(H)*17.9±0.5(D)
	Module weight ± tolerances	≤0.55 KGS
	Pixel density	147456 dots/
Cabinet parameters	Cabinet size ± tolerances	499.9(±0.1)(H)*999.9(±0.1)(V)* 76(±0.2)(D)
	Cabinet flatness	≤1.0mm
	Cabinet material	Die casting aluminum
	Cabinet weight ± tolerance	≤6.9KGS
Cabinet parameters of screen	Module quantity for 1 cabinet	2*4=8 PCS
	Cabinet resolution	192*384 dots
	Cabinet + Module size ± tolerance	499.9(±0.1)(H)*999.9(±0.1)(V)*85(±0.2)(D)
	Cabinet + Module weight ± tolerance	12.5 KGS
	Maintenance methods	Rear/Front
	Flatness	≤1.0mm

	Screen seams	≤1.0mm
Optical parameters	Pixel-by-pixel brightness correction	Support
	Pixel-by-pixel chromaticity correction	Support
	White balance brightness	≥700 cd/m2
	Color temperature	3000K-15000K
	Horizontal viewing angle	≥120°
	Vertical viewing angle	≥110°
	Viewing distance(=PITCH*1)	≥3m
Electrical parameters	Max. power consumption of cabinet	≤200 W
	Ave. power consumption	≤165W/
	Max. power consumption	≤470W/
	Power supply requirements	220-240V AC
Processing performance	Scan	32S
	Frame rate	50-60Hz
	Refresh rate	3840Hz-7680Hz
	Drive mode	Constant current
	Grayscale	14bits - 16bits
Control system	Control method	Ethernet port
	Control the distance	Cat5e Unshielded Twisted Pair
	Signal input	HDMI,DVI
	Brightness adjust	Manual/automatic/remote control
Operational parameters	Continuous working hours	≥ 5000hrs
	Mean time between failures	≥ 5000hrs
	Discrete out-of-control points	0 before shipping
	Continuous runaway points	0
	Blind spot rate	0 before shipping
	Screen temperature rise	≤ 65°C
Usage parameters	Typical life values	50000hrs
	Lamp temperature	≤60°
	Operating temperature	-10°~50°

	Storage temperature	-20°~50°
	Operating humidity	10~65%RH no condensation
	Storage humidity	10~65%RH no condensation
Protection	Protection level	IP30
Certification	CE/FCC/ROHS/ISO	/

Reference pictures:



