



SMD2727 P5 Indoor LED Video Wall Display 2880~3840Hz Refresh Waterproof

Our Product Introduction

Basic Information

- Place of Origin: SHENZHEN CHINA
- Brand Name: SOL COLUR
- Certification: CCC IP68 CE ISO9001 ROHS
- Model Number: P5
- Minimum Order Quantity: Square Meters / 1 Piece
- Price: Negotiable
- Packaging Details: Wooden box, Flight Case
- Delivery Time: 10 days after received deposit
- Payment Terms: L/C, D/A, D/P, T/T, Western Union
- Supply Ability: 5000 Square Meter/Square Meters per Month

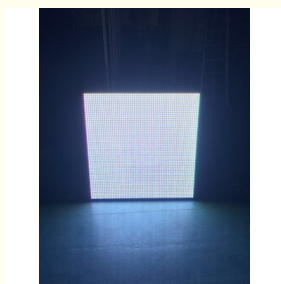


Product Specification

- Module Size: 320x160mm
- Pixel Density: 40000dots/
- Encapsulation Of Led: SMD2727RS
- Module Max Power Consumption: 26W
- Driving Mode: 1/8 Scan
- Brightness Of White Balance: $\geq 5500 \sim 6000 \text{cd/}$
- Refresh Frequency: 2880~3840Hz
- Average Power Consumption: 165W/
- Highlight: Indoor LED Video Wall 3840Hz, SMD2727 Indoor LED Video Wall, SMD2727 LED Video Wall Display



More Images



Product Description

SMD2727 P5 Indoor Full Color LED Display No Air Conditioning 2880~3840Hz Refresh

Product Specification:

	Item	Energy-saving	General
		SC-P5(2727)-64*32-2L8S-V1.6	SC-P5(2727)-64*32-2L8S-V1.6
Unit Module	Model Number	320x160mm	320x160mm
	module size	5mm	5mm
	pixel pitch	40000dots/s/	40000dots/s/
	Pixel density	1R1G1B	1R1G1B
	Pixel configuration	SMD2727RS	SMD2727RS
	Encapsulation of led	26W	35W
	Module Max Power consumption	64DOTS(W) * 32DOTS(H)	64DOTS(W) * 32DOTS(H)
	Module Display Resolution	16mm	16mm
	Thickness of a module	0.58kgs	0.58kgs
	Weight of a module	Constant drive (SUM2028)	Constant drive (SUM2016)
	Drive Type	1/8 scan	1/8 scan
	driving mode	HUB75	HUB75
	HUB type	≥5500~6000cd/	≥5500~6000cd/
	brightness of white balance	960x960mm	960x960mm
LED Cabinet	Diecast cabinets size	18pcs	18pcs
	Module quantity per cabinet	3.8V/40A*3pcs	5V/60A*3pcs
	Power supply	back maintenance	back maintenance
	Maintenance mode	fan 2pcs	fan 2pcs
	Thermal discharge	96*96DOTS	96*96DOTS
	Cabinets Display Resolution	4M~10M	4M~10M
	The best viewing distance	H:110° / W:110°	H:110° / W:110°
	The best viewing angle	storage:-35°C +85°C working:-20°C +50°C	storage:-35°C +85°C working:-20°C +50°C
	Environment temperature	10-95% Relative humidity	10-95% Relative humidity
	Operating humidity	100mm	100mm
Power	temperature	AC220V±10%	AC220V±10%
	operating power	165W/	325W/
	Average Power consumption	494W/	925W/
	Max.Power consumption	≤20mA(single LED)	≤20mA(single LED)
Control system	Current	Pentium4 or above P4	Pentium4 or above P4
	CPU	WIN98/2000/NT/XP/WIN7	WIN98/2000/NT/XP/WIN7
	Operation system	synchronization	synchronization
	Control method		

Main Technical parameter	Driving device	Constant drive IC	Constant drive IC
	Refresh frequency	≥1920Hz	≥1920Hz
	Grey scale/colors	4096 level/16.7M colors	4096 level/16.7M colors
		≥100000 Hours	≥100000 Hours
	lifespan	Automatic switch	Automatic switch
	Power switch		

Product Advantages

1.320*160mm standard module ,CNC finishing 960*960mm magnesium aluminum cabinet is 22kg/ lighter than traditional iron cabinet , 8kg/ lighter than die-casting aluminum ,Greatly reduce the installation structure cost. Magnesium-aluminum cabinet stitching is more higher and beautiful .

2.High brightness and low power consumption , better meeting the high reliability requirement for outdoor use.

3.Fully sealed magnesium-aluminum cabinet design, waterproof , dustproof, anti-corrosive, flame retardant ,UV resistant ,protection class up to IP65.

4. 2880~3840 High refresh rate, high grey scale level and high accurate color consistency guarantee the vivid pictures and perfect videos.

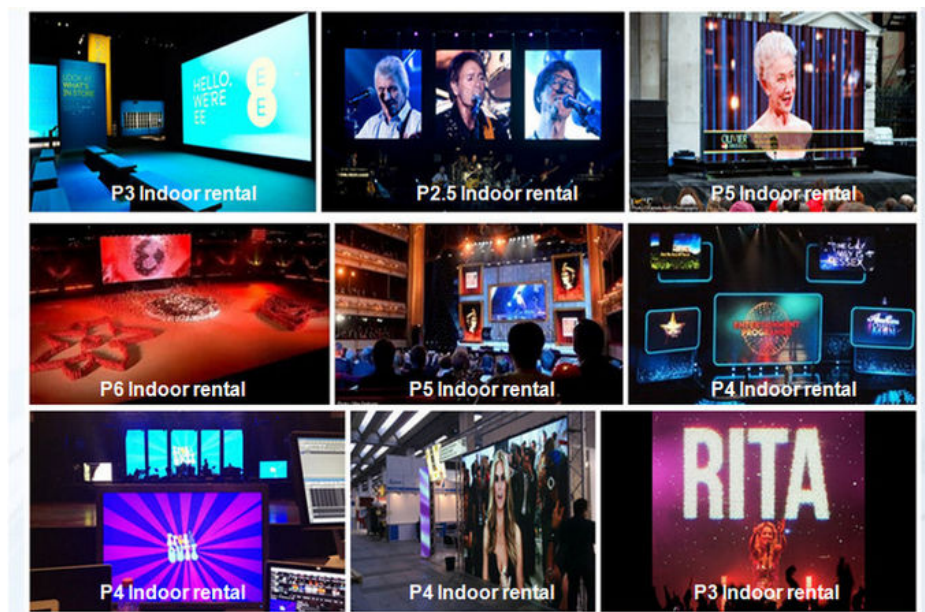
5.3.8V low-voltage power supply, with high-efficiency energy-saving drive IC, unique energy-saving technology design , saving about 70% , greatly reducing the display failure rate .

6.The new system integrates energy-saving design , low power consumption , low heat , low loss and automatic brightness control , which effectively reduces display failure rate and extends display life.

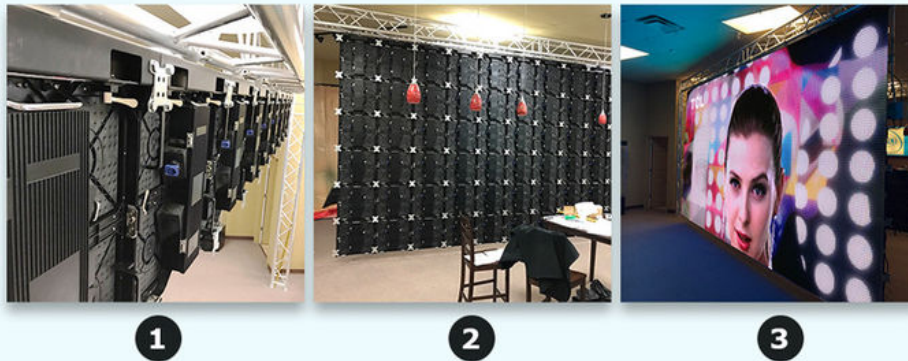
Application:

1.SOL-COLUR has been leading the development of the LED industry during the process of continuous innovation , With its unique technical advantages and strong production capacity , the products are well received by the market and use widely.

2.We established numerous classic cases in the outdoor advertising media , information display , image landmarks , stadiums, commercial real real estate, intelligent transportation, smart light poles , outdoor advertising machines, creative display and other commercial market areas .



Instation:



Our factory:



Company information

SHENZHEN SOL COLUR DISPLAY CO.,LTD. was established in December 2012,Is a leading LED display applications products and solutions provider,Specialized in LED research and development, manufacturing. Sales and servic,Dedicated to providing high-quality, high-performance LED applications and solutions for professional channel customers and end-users at home and abroad.

Our products have been widely used both at home and abroad. Since its foundation, we have become one of the best LED product and solution providers in the country through our unremitting efforts and have won the industry's highest recognition

The development of the company so far, the sales outlets throughout the country, the export products exported to more than 10 countries and regions, 3C, FCC, CE,IFA, IP65, IP68, IS9001, ROSH.AAA and other qualifications, product testing reports, patent certificate

From : Elena Duan

What's app no :
+8615019269218

SOL COLUR SHENZHEN SOL COLUR DISPLAY CO.,LTD

+86 13751136904

chenhao@sol-colour.com

sol-colur.com

2nd Floor, Building 8, Nangang Third Industrial Zone, TangtouCommunity, Shiyao Street, Bao'an District, Shenzhen