



## P10 Outdoor Fixed LED Display Wall Curtain Refresh Frequency 1920Hz AC220V

### Our Product Introduction

#### Basic Information

- Place of Origin: SHENZHEN CHINA
- Brand Name: Sol Colur
- Certification: CCC IP68 CE ISO9001 ROSH
- Model Number: Outdoor Energy Saving P10
- Minimum Order Quantity: Square Meters / 1 Piece
- Price: 14.3~ 27.67Negotiable
- Packaging Details: Wooden box,Flight Case
- Delivery Time: 10 days after received deposit
- Payment Terms: L/C, D/A, D/P, T/T, Western Union
- Supply Ability: 5000 Square Meters per Month

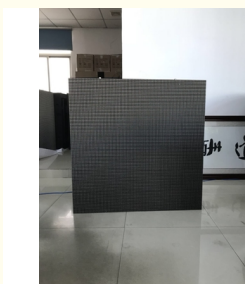


#### Product Specification

- Pixel Pitch: 10mm
- Encapsulation Of Led: SMD3535
- Module Max Power Consumption: 27W
- Module Display Resolution: 32DOTS(W) \* 16DOTS(H)
- Drive Type: Constant Drive (SUM2017TD)
- Pixel Configuration: 1R1G1B
- The Best Viewing Angle: H:110° / W:110°
- Operating Power: AC220V±10%
- Highlight: **Outdoor Fixed LED Display 1920Hz,  
AC220V Outdoor Fixed LED Display,  
P10 LED Display 1920Hz**



#### More Images



## Product Description

165w/ P10 Outdoor SMD LED Display Wall Curtain Refresh Frequency 1920Hz AC220V

	Item	Energy-saving	General
	Model Number	SC-P10 (3535)- 32*16- 2L5S- V1.6	SC-P10 (3535)- 32*16- 2L5S- V1.6
Unit Module	pixel pitch	10mm	10mm
	encapsulation of led	SMD3535	SMD3535
	Module Max Power consumption	27W	35W
	Module Display Resolution	32DOTS(W) * 16DOTS(H)	32DOTS(W) * 16DOTS(H)
	Drive Type	Constant drive (SUM2017TD)	Constant drive (SUM2016)
	pixel configuration	1R1G1B	1R1G1B
	pixel density	10000dots/	10000dots/
	driving mode	1/2 scan	1/2 scan
	module size	320x160mm	320x160mm
	HUB type	HUB75	HUB75
	Weight of a module	0.58kgs	0.58kgs
	brightness of white balance	≥6500~7000cd/	≥6500~7000cd/
	Thickness of a module	16mm	16mm
	Diecast cabinets size	960x960mm	960x960mm
	Module quantity per cabinet	18pcs	18pcs
	Power supply	3.8V/40A*3pcs	5V/60A*3pcs
	Maintenance mode	Front or back maintenance	Front or back maintenance
	Thermal discharge fan	1pcs	2pcs
	Cabinets Display Resolution	96*96DOTS	96*96DOTS
	The best viewing distance	4M~10M	4M~10M
	The best viewing angle	H:110° / W:110°	H:110° / W:110°

Our Product Introduction

for more products please visit us on [sol-colour.com](http://sol-colour.com)

LED Cabinet	Environment temperature	storage:-35°C +85°C working:-20°C +50°C	storage:-35°C +85°C working:-20°C +50°C
	Operating humidity	10-95% Relative humidity	10-95% Relative humidity
	temperature	100mm	100mm
	operating power	AC220V±10%	AC220V±10%
Power	Average Power consumption	165W/	325W/
	Max.Power consumption	494W/	925W/
	Current	≤20mA(single LED)	≤20mA(single LED)
Control system	Control method	synchronization	synchronization
	Operation system	WIN98/2000/NT/XP/Win7	WIN98/2000/NT/XP/Win7
	CPU	Pentium4 or above P4	Pentium4 or above P4
Main Technical parameter	Refresh frequency	≥1920Hz	≥1920Hz
	lifespan	≥100000 Hours	≥100000 Hours
	Power switch	Automatic switch	Automatic switch
	Grey scale/color level	4096 level/16.7M colors	4096 level/16.7M colors
	Driving device	Constant drive IC	Constant drive IC

#### Product Description:

1. Energy-saving Design : Power consumption is lower than DIP outdoor products, each LED electric current is below 15mA, lifespan is longer, can reduce 25-50% of the power consumption effectively, low-carbon environmental protection, save electricity for customers .
2. Wide Viewing Angle : LED SMD encapsulation technology, makes surface more smooth, the outdoor full color LED Display can reach 140 degrees viewing angle both in the horizontal and the vertical direction, this has special advantages in some place, such as wall LED Display, requires a wide viewing angle to show better advertising effect.
3. Nice Color Blending : color uniformity is good, outdoor SMD 3-in-1 design technology makes all the red, green, and blue chip in one structure, distance is close, so it ensures the coherence of brightness at optional angle is very good, achieve vivid viewing effect, at the same time, the mask is dealt with special processing, can ensure the coherence of product's brightness further.
4. High Definition : High contrast, due to 3-IN-1 design structure, full-color SMD3535 lamp bead size is small, so the light emitting area is small, the black area is large, enhances the contrast of LED Screen, the 1/2 scan mode high refresh rate, the gray level > 16384, the refresh rate > 1200 Hz,makes the outdoor full-color LED Display is clear enough to replace the traditional DIP LED Display.
5. Good Heat Dissipation: using six Angle SMD3535 lamp bead, the heat of lamp and IC can be dispersed by PCB board more effectively, improve the heat dissipation performance of LED display module significantly.
6. High Automation Production Efficiency: SMD LED can be processed by automatic SMT mounter, improving production efficiency, reducing defective product rate.
7. Light Cabinet Weight : Outdoor SMD 3-IN-1 LED uses waterproof glue filling process, because of low lamp foot, don't need too much glue to cover the lamp foot like the DIP, the surface is nice and not deformed easily, assembling is convenient and neat. Unit module is very suitable for rental companies, truck mounted LED screen, mobile media advertising usage etc.

#### Product Specification:

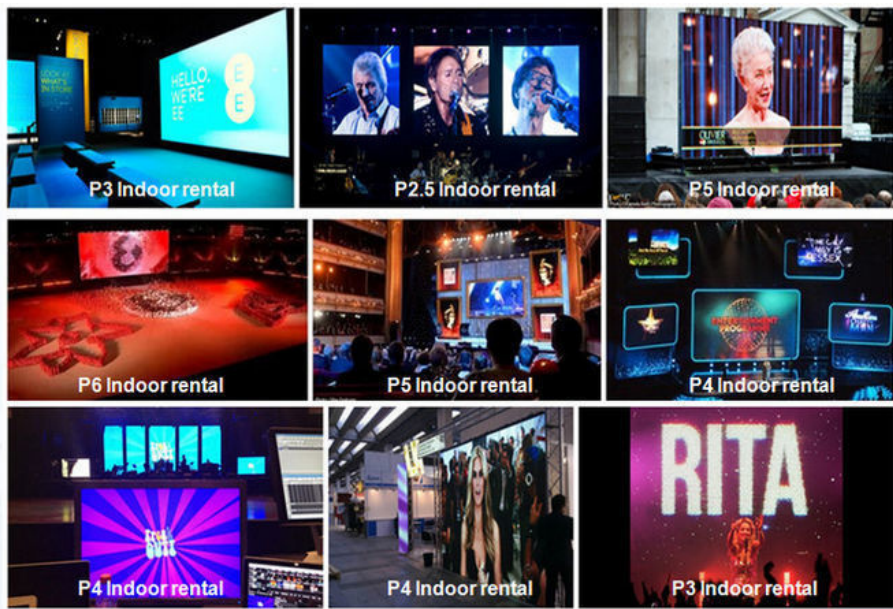
Technical parameters	UNIT	P10-R
Pixel pitch	MM	10

Module size	MM	L320XH160X34
Physical density	/M2	10000
Pixel configuration	R	1
Driving method		1/2scan
LED Encapsulation	SMD	3535
Display resolution	DOTS	32X16=512dots
Module weight	KG	0.8
Module working voltage	VDC	5V
Module consumption	W	15-20
Option distance	M	10-110
Every square metre module	PCS	20
Viewing angle	Deg.	H110 V50
Maximum power	W/ M2	400
Frame Frequency	HZ/S	≥60
Refresh frequency	HZ/S	≥400
Equilibrium brightness	CD/ M2	≥1800
Working environment temperature	0C	-20~60
Working environment humidity	RH	10%~90%
Mean free error time	HOURS	>5000
Life	HOURS	100000
Lamp failure frequency		

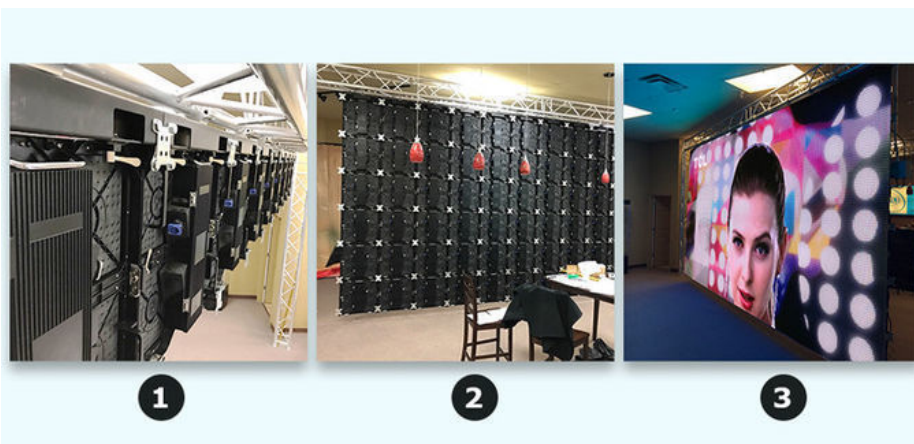
### Project Case:







Instation:



Our factory:



When it comes to LED display screen , Sol Colur is the best for sure.

#### Company information

SHENZHEN SOL COLUR DISPLAY CO.,LTD. was established in December 2012,Is a leading LED display applications products and solutions provider,Specialized in LED research and development, manufacturing. Sales and servic,Dedicated to providing high-quality, high-performance LED applications and solutions for professional channel customers and end-users at home and abroad.

Our products have been widely used both at home and abroad. Since its foundation, we have become one of the best LED product and solution providers in the country through our unremitting efforts and have won the industry's highest recognition

The development of the company so far, the sales outlets throughout the country, the export products exported to more than 10 countries and regions, 3C, FCC, CE, IFA, IP65, IP68, IS9001, ROHS.AAA and other qualifications, product testing reports, patent certificate

From : Elena Duan
What's app no : +8615019269218

 **SHENZHEN SOL COLUR DISPLAY CO.,LTD**



+86 13751136904



chenhao@sol-colour.com



sol-colur.com

2nd Floor, Building 8, Nangang Third Industrial Zone, TangtouCommunity, Shiyan Street, Bao'an District,  
Shenzhen