

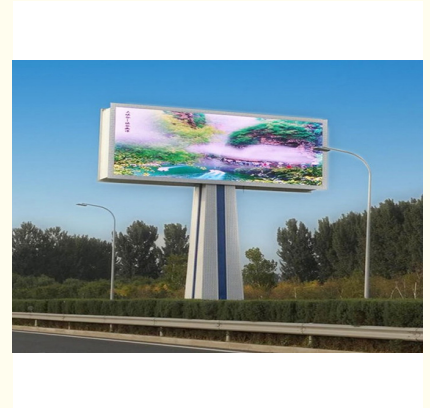


SMD2727 Outdoor Led Advertising Screens 1/4 Scan Mode 22Mm Module Thickness

Our Product Introduction

Basic Information

- Place of Origin: SHENZHEN, CHINA
- Brand Name: SOL COLUR
- Certification: IP65, CE, EMC
- Model Number: P8
- Minimum Order Quantity: 1 Square Meters
- Price: Negotiable
- Packaging Details: CARTON, WOODEN CASE FLIGHT CASE
- Delivery Time: 15-20 days
- Payment Terms: L/C, D/A, D/P, T/T, Western Union
- Supply Ability: 5000 Square Meter/Square Meters per Month



Product Specification

- Module Size: 320mm*160mm
- Pixel Pitch: 8mm
- Pixel Resolution: 40dots(W)*20dots(H)
- Max Power: 25W
- Module Weight: 0.37kg
- Module Thickness: 22mm
- Highlight: SMD2727 Outdoor Led Advertising Screens, Led Advertising Screens 1/4 Scan



Product Description

SMD2727 Outdoor Advertising LED Display 1/4 Scan Mode 22Mm Module Thickness

Product Description

1. All our outdoor LED display screen with high quality LED, quality is very high. Less dead lamps even used over 2-3 years. It can save much money for maintenance.
2. Our product possesses IP65 protection level, which enables display working for you under rainy days.
3. High brightness LEDs with high luminous efficiency and low brightness decay.
4. Using high-quality LED driver chip, the whole system can adapt to outdoor harsh environment and long-term stable operation.
5. Outdoor LED Display, IP65, Fast Installation IP65 for modules, meets outdoor naked installation requirements. Design based on module, which saves installation and maintenance cost, fast speed, maintenance with power on.

P8 technology parameters

| Item | Parameter |
|--------------------------|-----------------------------|
| Unit Module | Model Number |
| | SF-SS8-4-A |
| | Module size |
| | 320mm*160mm |
| | Pixel pitch |
| | 8mm |
| | Pixels Density |
| | 15625dots/m2 |
| | Pixel configuration |
| | 1R1G1B |
| | Package mode |
| | SMD2727 |
| | Pixel resolution |
| | 40dots(W)*20dots(H) |
| LED Cabinet | Max Power |
| | 25W |
| | Module thickness |
| | 22mm |
| | Weight |
| | 0.37kg |
| | Drive type |
| | Constant drive |
| | Scan mode |
| | 1/4 |
| | Port type |
| | HUB75-A |
| | Brightness of white balance |
| | ≥6200 6500cd/m2 |
| LED Cabinet | Dimension |
| | 1024mm*768mm*100 mm |
| | Monomer Module Number |
| | 24pcs |
| | Power supply |
| | 5V/40A*4pcs |
| | Thermal discharge |
| | fan 2pcs |
| | Pixel per cabinet |
| | 128mm*96mm |
| Power | Best viewing distance |
| | 8M 15M |
| | Best viewing angle |
| | 120°(W) 110°(H) |
| | Temperature |
| Power | storage:-35°C +85°C |
| | working:-20°C +50°C |
| | Relative humidity |
| | 10%-95% |
| | Thickness |
| Power | 122mm |
| | Working voltage |
| | AC220V±10% |
| | Average Power consumption |
| | 330W/ |
| Control system | Max Power consumption |
| | ≤1100W/ |
| | Current |
| | ≤20mA(single LED) |
| | CPU |
| Main technical parameter | Pentium4 or above P4 |
| | Operation system |
| | WIN98/2000/NT/XP/WIN7 |
| | Control method |
| | Synchronization |
| Main technical parameter | Driving device |
| | Constant drive IC |
| | Refresh frequency |
| | ≥1920HZ |
| | Grey scale/colors |
| Main technical parameter | 4096gray level/16.7M colors |
| | MTBF |
| | ≥100000hours |
| | Power switch |
| | Automatic switch |
| Main technical parameter | Display Mode |
| | ≥800*600/1024*768 |

Products Feature

1. Our LED display can be installed in different areas all over the world. Low temperature as -20°C and high temperature as +50°C, high humidity and high salty air environment such as seaside, our cabinet is moisture-proof and salt-proof.
2. Outdoor rental display screen W8 with high refresh rate (≥1920Hz), which is 1/4 scan method for energy saving and low heating.
3. Good heat dissipation with fan cooling system.
4. SMD LEDs ensure large viewing angle, up to 110° horizontally and 120° vertically.
5. Widely used in tent market, ideal for advertising in busy street or intersections, conference, shows, concerts, sporting event, grand opening, exhibitions, political rallies, elections etc.

Project Show:



SOL COLUR  **SHENZHEN SOL COLUR DISPLAY CO.,LTD**

 +86 13751136904

 chenhao@sol-colour.com

 sol-colour.com

2nd Floor, Building 8, Nangang Third Industrial Zone, TangtouCommunity, Shiyan Street, Bao'an District,
Shenzhen