



## Full Color RGB Advertising P8 Outdoor Led Display Screen 320x320mm Module IP65

Our Product Introduction

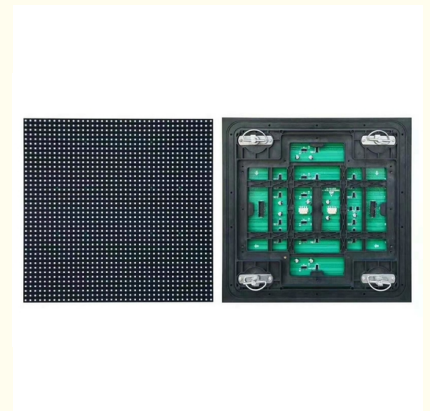
### Basic Information

- Place of Origin: SHENZHEN CHINA
- Brand Name: SC
- Certification: CCC IP68 CE
- Model Number: outdoor SMDP8
- Minimum Order Quantity: Square Meters / 1 Piece
- Price: Negotiable
- Packaging Details: Wooden box, Flight Case
- Delivery Time: 10 days after received deposit
- Payment Terms: L/C, D/A, D/P, T/T, Western Union, MoneyGram
- Supply Ability: 5000 Square Meter/Square Meters per Month



### Product Specification

- Module Size: 320x320mm
- Pixel Density: 15625dots/
- Encapsulation Of Led: SMD3535
- Brightness Of White Balance:  $\geq 4500 \sim 5000 \text{cd/}$
- Power Supply: 3.8 V/40A\*3pcs
- Average Power Consumption: 200W/
- Environment Temperature: Storage:-35°C +85°C Working:-20°C +50°C
- Lifespan:  $\geq 100000 \text{Hours}$
- Highlight: **P8 Outdoor Led Display P8 Outdoor Led Display**  
, outdoor led display screen 320x320mm,  
outdoor led display screen IP65



### More Images



for more products please visit us on [sol-colur.com](http://sol-colur.com)

## Product Description

Full Color RGB Advertising Led Display Screen P8 15625 Dots / Constant Drive

When it comes to LED display screen, Sol Colour is the best for sure .

### Product Specification:

	Item	Energy-saving	General
Unit Module	Model Number	SC-P8(3535)-40*40-2L5S-V1.6-V1.6	SC-P8(3535)-40*40-2L5S-V1.6-V1.6
	module size	320x320mm	320x320mm
	pixel pitch	8mm	8mm
	Pixel density	15625dots/m2	15625dots/m2
	Pixel configuration	1R1G1B	1R1G1B
	Encapsulation of led	SMD3535	SMD3535
	Mudule Max Power consumption	46W	66W
	Mudule Display Resolution	40DOTS(W) * 40DOTS(H)	40DOTS(W) * 40DOTS(H)
	Thickness of a mudule	16mm	16mm
	Weight of a mudule	1.5kgs	1.5kgs
	Drive Type	Constant drive (SUM2028)	Constant drive (SUM2028)
	driving mode	1/5 scan constant current	1/5 scan constant current
	HUB type	HUB75	HUB75
	brightness of white balance	≥4500~5000cd/m2	≥4500~5000cd/m2
LED Cabinet	Diecast cabinets size	960x960mm	960x960mm
	Module quantity per cabinet	9pcs	9pcs
	Power supply	3.8 V/40A*3pcs	5V V/60A*3pcs
	Maintenance mode	Front or back maintenance	Front or back maintenance
	Thermal discharge	fan 2pcs	fan 2pcs
	Cabinets Display Resolution	96*96DOTS	96*96DOTS
	The best viewing distance	4M~10M	4M~10M
	The best viewing angle	H:110° / W:110°	H:110° / W:110°
	Environment temperature	storage:-35℃ +85℃ working:-20℃ +50℃	storage:-35℃ +85℃ working:-20℃ +50℃
	Operating humidity	10-95% Relative humidity	10-95% Relative humidity
	temperature	100mm	100mm
Power	operating power	AC220V±10%	AC220V±10%
	Average Power consumption	200W/	325W/
	Max.Power consumption	608W/	935W/
	Current	≤20mA(single LED)	≤20mA(single LED)
	CPU	Pentium4 or above P4	Pentium4 or above P4

Control system	Operation system	WIN98/2000/NT/XP/WIN7	WIN98/2000/NT/XP/WIN7
	Control method	synchronization	synchronization
Main Technical parameter	Driving device	Constant drive IC	Constant drive IC
	Refresh frequency	≥1920Hz	≥1920Hz
	Grey scale/colors	4096 level/16.7M colors	4096 level/16.7M colors
	lifespan	≥100000Hours	≥100000Hours
	Power switch	Automatic switch	Automatic switch

**Advantage :**

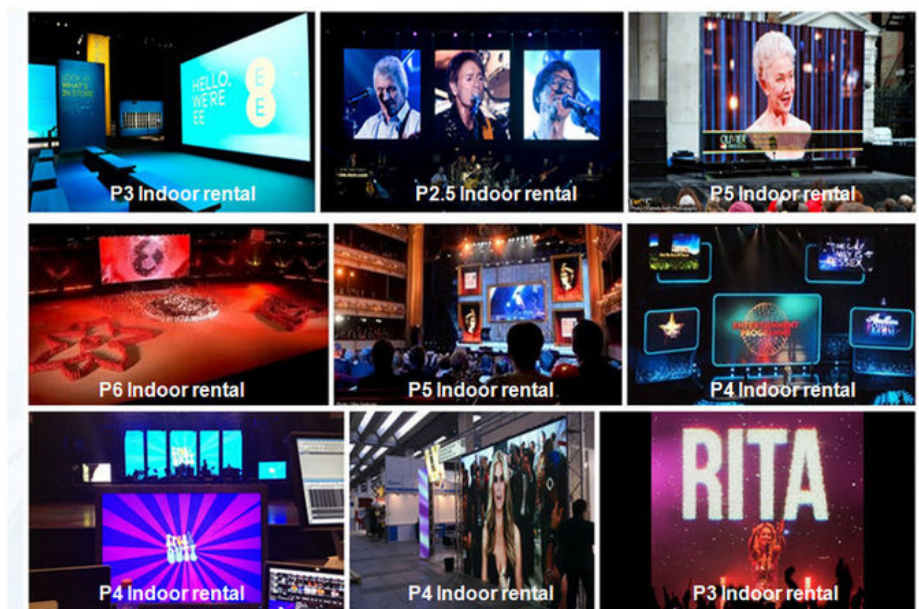
- 1 . New mask design makes LED light almost zero reflection, which ensures the screen displaying effect;
- 2 . The cabinet of unit modules adopts to high-temperature spraying technology, the antirust function is greatly improved;
- 3 . Module surface flatness  $\pm 0.2\text{mm}$ , the entire screen has good flatness;
- 4 . High uniformity display color;
- 5 . For improving the service life, PCB is made by wave soldering process with the green oxygen isolation layer, which prevents the line of moisture and oxidation.
- 6 . Service efficiency of the screen switch power supply is increased substantially, which reduces power failure rate;
- 7 . Using fishbone bus line greatly reduces the contact problem;
- 8 . IP65 grade for high performance waterproof and dustproof capability;
- 9 .  $-35^{\circ}\text{C} - 85^{\circ}\text{C}$  working environment for outdoor display, adapted to the harsh environment;

**Company information**

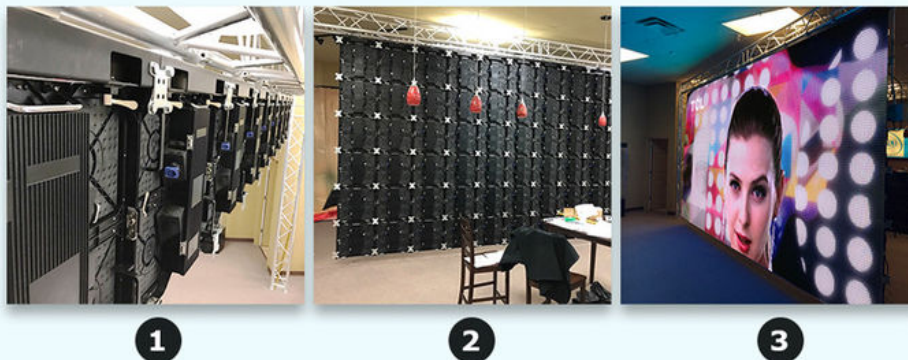
SHENZHEN SOL COLUR DISPLAY CO.,LTD. was established in December 2012,Is a leading LED display applications products and solutions provider,Specialized in LED research and development, manufacturing. Sales and servic,Dedicated to providing high-quality, high-performance LED applications and solutions for professional channel customers and end-users at home and abroad.

Our products have been widely used both at home and abroad. Since its foundation, we have become one of the best LED product and solution providers in the country through our unremitting efforts and have won the industry's highest recognition

The development of the company so far, the sales outlets throughout the country, the export products exported to more than 10 countries and regions, 3C, FCC, CE,IFA, IP65, IP68, IS9001, ROSH.AAA and other qualifications, product testing reports, patent certificate



Instation:



Our factory:



From : Elena Duan

What's app no :  
+8615019269218

**SOL COLUR SHENZHEN SOL COLUR DISPLAY CO.,LTD**

+86 13751136904

chenhao@sol-colour.com

sol-colur.com

2nd Floor, Building 8, Nangang Third Industrial Zone, TangtouCommunity, Shiyan Street, Bao'an District, Shenzhen