

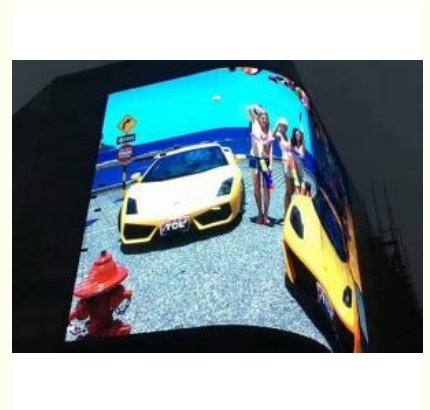


1920Hz 3D LED Video Wall Screen Energy Saving P10 Synchronization Control

Our Product Introduction

Basic Information

- Place of Origin: SHENZHEN CHINA
- Brand Name: SHENZHEN CHINA
- Certification: CCC IP68 CE
- Model Number: outdoor SMD P10
- Minimum Order Quantity: Square Meters / 1 Piece
- Price: USD14.3~26.76/PCS
- Packaging Details: Wooden box, Flight Case
- Delivery Time: 10 days after received deposit
- Payment Terms: L/C, D/P, T/T, Western Union
- Supply Ability: 5000 Square Meters per Month



Product Specification

- Encapsulation Of Led: SMD3535
- Driving Device: Constant Drive IC
- Power Supply: 3.8 V/40A*3pcs
- Current: ≤20mA(single LED)
- Control Method: Synchronization
- Pixel Density: 10000dots/
- Grey Scale/colors: 4096 Level/16.7M Colors
- Module Size: 320x160mm
- Highlight: 1920Hz 3D LED Video Wall,
LED Video Wall Screen Energy Saving,
3D LED Video Wall Synchronization Control



for more products please visit us on sol-colur.com

Product Description

1920Hz Led Wall Screen Display Outdoor Energy Saving P10 Synchronization Control

When it comes to LED display screen , sol colour is the best for sure

	Item	Energy-saving	General
Unit Module	Model Number	SC-P10 (3535)-32*16-2L5S-V1.6	SC-P10 (3535)-32*16-2L5S-V1.6
	pixel pitch	10mm	10mm
	encapsulation of led	SMD3535	SMD3535
	Mudule Max Power consumption	27W	35W
	Mudule Display Resolution	32DOTS(W) * 16DOTS(H)	32DOTS(W) * 16DOTS(H)
	Drive Type	Constant drive (SUM2017TD)	Constant drive (SUM2016)
	pixel configuration	1R1G1B	1R1G1B
	pixel density	10000dots/	10000dots/
	driving mode	1/4 scan	1/4 scan
	module size	320x160mm	320x160mm
	HUB type	HUB75	HUB75
	Weight of a mudule	0.58kgs	0.58kgs
	brightness of white balance	≥6500~7000cd/	≥6500~7000cd/
	Thickness of a mudule	16mm	16mm
LED Cabinet	Diecast cabinets size	960x960mm	960x960mm
	Module quantity per cabinet	18pcs	18pcs
	Power supply	3.8 V/40A*3pcs	5 V/60A*3pcs
	Maintenance mode	Front or back maintenance	Front or back maintenance
	Thermal discharge	fan 1pcs	fan 2pcs
	Cabinets Display Resolution	96*96DOTS	96*96DOTS
	The best viewing distance	4M~10M	4M~10M
	The best viewing angle	H:110° / W:110°	H:110° / W:110°
	Environment temperature	storage:-35℃ +85℃ working:-20℃ +50℃	storage:-35℃ +85℃ working:-20℃ +50℃
	Operating humidity	10-95% Relative humidity	10-95% Relative humidity
	temperature	100mm	100mm
Power	operating power	AC220V±10%	AC220V±10%
	Average Power consumption	165W/	325W/
	Max.Power consumption	494W/	925W/
	Current	≤20mA(single LED)	≤20mA(single LED)
Control	Control method	synchronization	synchronization
	Operation system	WIN98/2000/NT/XP/WIN7	WIN98/2000/NT/XP/WIN7

Our Product Introduction

for more products please visit us on sol-colour.com

system	CPU	Pentium4 or above P4	Pentium4 or above P4
Main Technical parameter	Refresh frequency	≥1920Hz	≥1920Hz
	lifespan	≥100000Hours	≥100000Hours
	Power switch	Automatic switch	Automatic switch
	Grey scale/colors	4096 level/16.7M colors	4096 level/16.7M colors
	Driving device	Constant drive IC	Constant drive IC

Advantages :

1. Unique power PCB circuit design , decreasing rich voltage , consuming capacity

2.3.8V low voltage supply power, low power consumption , low heat , reducing operated cost largely

3.High-effect LED ,reducing VF value of LED ,current consumption , Promote Luminous Efficiency

4.high-effect Constant drive IC , reduce driving circuitry consumption

5.CNC precision work standard cabinet , magnesium and aluminium material , more beautiful

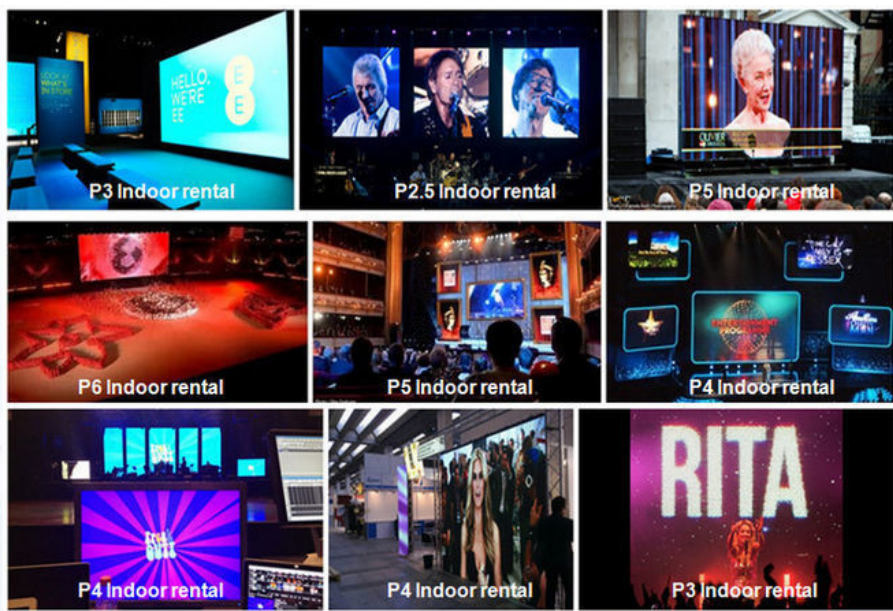
6.Anti UV, anti deformation module suite to protect the screen body deformation. ,with rear cover , waterproof , dustproof , anticorrosion

7.Entirely new system integrated design , combined with automatic brightness control method , extending display screen lifespan

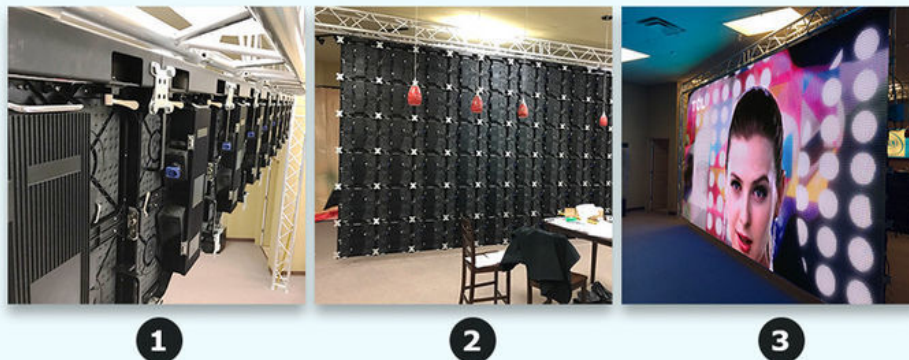
The outdoor LED Display is manufactured by using best quality material, purchased from most reputed vendors. The final products feature supreme quality and offers best outputs. High refresh rate and gray scale ensures the picture quality remains seamless.

Project Show:





Instation:



Our factory:



Company information

SHENZHEN SOL COLUR DISPLAY CO.,LTD. was established in December 2012,Is a leading LED display applications products and solutions provider.Specialized in LED research and development, manufacturing. Sales and servic,Dedicated to providing high-quality, high-performance LED applications and solutions for professional channel customers and end-users at home and abroad.

Our products have been widely used both at home and abroad. Since its foundation, we have become one of the best LED product and solution providers in the country through our unremitting efforts and have won the industry's highest recognition

The development of the company so far, the sales outlets throughout the country, the export products exported to more than 10 countries and regions, 3C, FCC, CE.IFA, IP65, IP68, IS9001, ROHS.AAA and other qualifications, product testing reports, patent certificate

From : Elena Duan
What's app no : +8615019269218

SOL COLUR SHENZHEN SOL COLUR DISPLAY CO.,LTD



+86 13751136904



chenhao@sol-colour.com



sol-colur.com

2nd Floor, Building 8, Nangang Third Industrial Zone, TangtouCommunity, Shiyan Street, Bao'an District,
Shenzhen