



## 1920Hz P10 Outdoor Fixed LED Display Front Back Maintenance Easy To Install

### Our Product Introduction

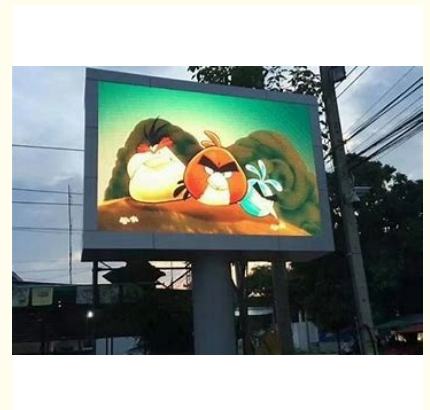
#### Basic Information

- Place of Origin: SHENZHEN, CHINA
- Brand Name: SOL COLUR
- Certification: IP65, CCC, CE
- Model Number: P10
- Minimum Order Quantity: 1 Square Meters
- Price: Negotiable
- Packaging Details: CARTON, WOODEN CASE, FLIGHT CASE
- Delivery Time: 10~20 work days
- Payment Terms: L/C, D/A, D/P, T/T, Western Union
- Supply Ability: 5000 Square Meter/Square Meters per Month



#### Product Specification

- Encapsulation Of Led: SMD3535
- Module Max Power Consumption: 46W
- Module Display Resolution: 32DOTS(W) \* 32DOTS(H)
- Drive Type: Constant Drive (SUM2028)
- Pixel Configuration: 1R1G1B
- Pixel Density: 10000dots/
- Brightness Of White Balance:  $\geq 6500 \sim 7000 \text{cd/}$
- Power Supply: 3.8 V/40A\*3pcs
- Highlight: 1920Hz Outdoor Fixed LED Display, Outdoor Fixed LED Display Back Maintenance, 1920Hz Outdoor Fixed LED screen



#### More Images



## Product Description

1920Hz P10 Outdoor SMD LED Display 320x320mm Module 200w/ Front / Back Maintenance

	Item	Energy-saving	General
	Model Number	SC-P10 (3535)- 32*32- 2L5S- V1.6	SC-P10 (3535)- 32*32- 2L5S- V1.6
Unit Module	pixel pitch	10mm	10mm
	encapsulation of led	SMD3535	SMD3535
	Module Max Power consumption	46W	66W
	Module Display Resolution	32DOTS(W) * 32DOTS(H)	32DOTS(W) * 32DOTS(H)
	Drive Type	Constant drive (SUM2028)	Constant drive (SUM2028)
	pixel configuration	1R1G1B	1R1G1B
	pixel density	10000dots/	10000dots/
	driving mode	1/2 scan constant current	1/2 scan constant current
	module size	320x320mm	320x320mm
	HUB type	HUB75	HUB75
	Weight of a module	1.5kgs	1.5kgs
	brightness of white balance	≥6500~7000cd/	≥6500~7000cd/
	Thickness of a module	16mm	16mm
	Diecast cabinets size	960x960mm	960x960mm
	Module quantity per cabinet	9pcs	9pcs
	Power supply	3.8V/40A*3pcs	5V / 60A*3pcs
	Maintenance mode	Front or back maintenance	Front or back maintenance
	Thermal discharge fan	2pcs	2pcs
	Cabinets Display Resolution	96*96DOTS	96*96DOTS
	The best viewing distance	4M~10M	4M~10M
	The best viewing angle	H:110° / W:110°	H:110° / W:110°

Our Product Introduction

for more products please visit us on [sol-colour.com](http://sol-colour.com)

LED Cabinet	Environment temperature	storage:-35°C +85°C working:-20°C +50°C	storage:-35°C +85°C working:-20°C +50°C
	Operating humidity	10-95% Relative humidity	10-95% Relative humidity
	temperature	100mm	100mm
Power	operating power	AC220V±10%	AC220V±10%
	Average Power consumption	200W/	325W/
	Max.Pow er consumption	608W/	935W/
	Current	≤20mA(single LED)	≤20mA(single LED)
Control system	Control method	synchronization	synchronization
	Operation system	WIN98/2000/NT/XP/ WIN7	WIN98/2000/NT/XP/ WIN7
	CPU	Pentium4 or above P4	Pentium4 or above P4
Main Technical parameter	Refresh frequency	≥1920Hz	≥1920Hz
	lifespan	≥100000 Hours	≥100000 Hours
	Power switch	Automatic switch	Automatic switch
	Grey scale/color level/16.7M colors	4096 level/16.7M colors	4096 level/16.7M colors
	Driving device	Constant drive IC	Constant drive IC

#### Products Feature

1. Easy to Install: No need to do structure, can directly mounted the LED display on the wall with screws.
2. Easy to maintenance: The LED cabinets can be open from the front, maintenance person is easy to open and maintenance the LED Display from the front.
3. Fixed LEDs: Ensure seamless and flatness,wide viewing angle,nice video effect.
4. Support all formats of videos,graphics,images,texts,messages,flash,animation,etc.
5. High brightness can the brightness can be adjustable according to the surrounding environments.
6. Support PC online or offline control, also can remote control with asynchronous system,wifi control, 3G control.

#### Product Description

LED display, also called led screen, led video wall, or led sign, with its unique advantages, has gradually replaced the traditional billboards, light boxes, etc. LED display advertising has become a new force in the media industry. Traditional advertising can only show pictures, But LED display/led video wall/led screen can perfect combine text, pictures, video, and sound with high resolution, high brightness and full colour!

LED display Advertising screen can easily attract the attention of pedestrians, and also are easy to remember, which can generate greater advertising effectiveness.Led display screen now are widely applied in media advertising, transportation, Security,Real estate and Stage show background.

#### Project Show:

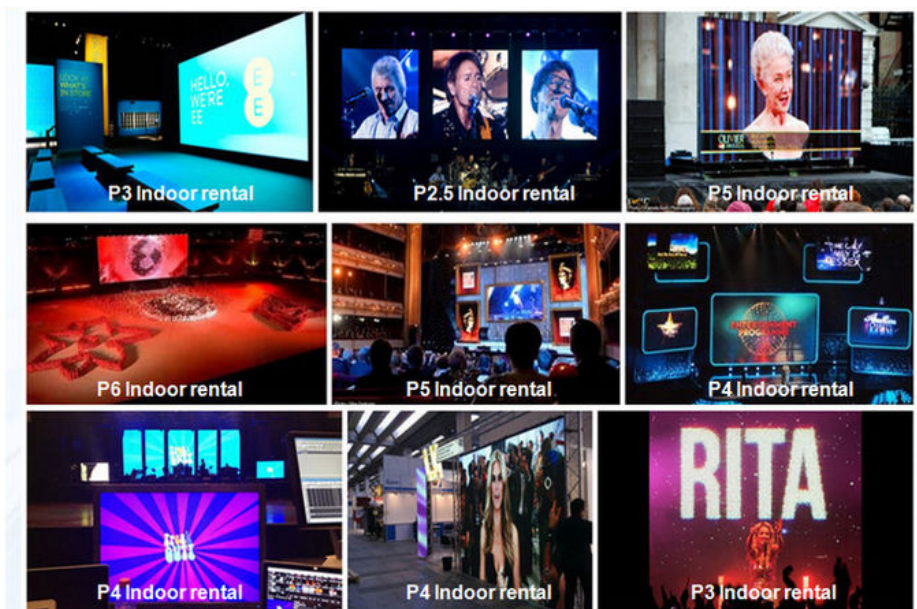


### Company information

SHENZHEN SOL COLUR DISPLAY CO.,LTD. was established in December 2012,Is a leading LED display applications products and solutions provider,Specialized in LED research and development, manufacturing. Sales and servic,Dedicated to providing high-quality, high-performance LED applications and solutions for professional channel customers and end-users at home and abroad.

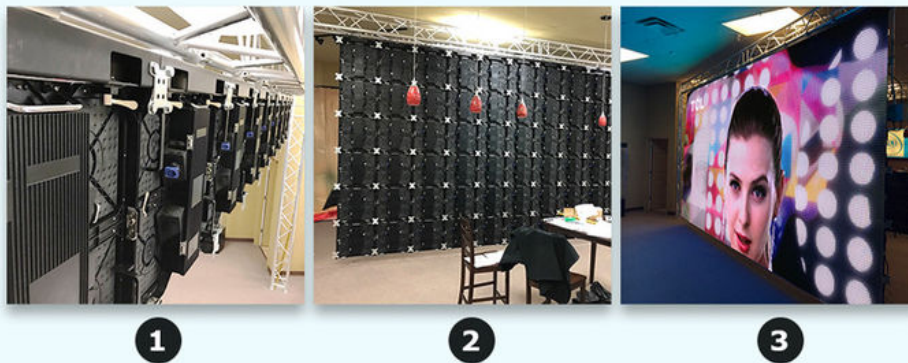
Our products have been widely used both at home and abroad. Since its foundation, we have become one of the best LED product and solution providers in the country through our unremitting efforts and have won the industry's highest recognition

The development of the company so far, the sales outlets throughout the country, the export products exported to more than 10 countries and regions, 3C, FCC, CE,IFA, IP65, IP68, IS9001, ROSH.AAA and other qualifications, product testing reports, patent certificate



Instation:





Our factory:



From : Elena Duan

What's app no :  
+8615019269218

**SOL COLUR SHENZHEN SOL COLUR DISPLAY CO.,LTD**

+86 19860878327

cg-01@sol-colour.com

sol-colour.com

2nd Floor, Building 8, Nangang Third Industrial Zone, TangtouCommunity, Shiyan Street, Bao'an District, Shenzhen