

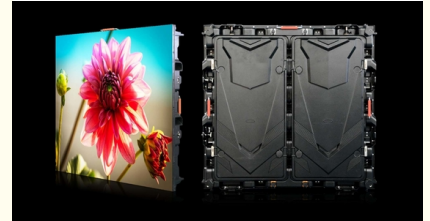


Front Back Maintenance Led Stage Display Screen P16 Synchronization Control

Our Product Introduction

Basic Information

- Place of Origin: Shenzhen
- Brand Name: SOL COLUR
- Certification: SO9001 3C CE FCC IP65 IP68 ISO14001 ROHS
- Model Number: P16 DIP energy saving
- Minimum Order Quantity: 1 Square Meters/per square meters
- Price: USD 520.43-589.34 Square Meters
- Packaging Details: Wooden box flight case,
- Delivery Time: 10 days after received deposit
- Payment Terms: L/C, D/A, D/P, T/T, Western Union
- Supply Ability: 5000 Square Meters per Month



Product Specification

- Module Size: 320x320mm
- Pixel Density: 3906dots/
- Encapsulation Of Led: DIP346
- Module Max Power Consumption: 34W
- Brightness Of White Balance: $\geq 7000 \sim 7500 \text{cd/}$
- Maintenance Mode: Front And Back Maintenance
- Control Method: Synchronization
- Refresh Frequency: $\geq 1920 \text{Hz}$
- Highlight: **Led Stage Display Screen P16,
Led Stage Display Screen Synchronization
Control**
**,
front maintenance led display Synchronization
Control**



for more products please visit us on sol-colur.com

Product Description

Stage Curved LED Display Panel P16 Constant Drive IC DIP 100w/ Average Power Consumption

Outdoor Led Display Specifications:

	Item	Energy-saving	General
Unit Module	Model Number	SC-P16(346)20*20-V1.6	SC-P16(346)20*20-V1.6
	module size	320x320mm	320x320mm
	pixel pitch	16mm	16mm
	Pixel density	3906dots/	62500dots/
	Pixel configuration	1R1G1B	1R1G1B
	Encapsulation of led	DIP346	DIP346
	Mudule Max Power consumption	34W	51W
	Mudule Display Resolution	20DOTS(W) * 20DOTS(H)	20DOTS(W) * 20DOTS(H)
	Thickness of a mudule	26mm	26mm
	Weight of a mudule	1.5kgs	1.5kgs
	Drive Type	Constant drive (SUM2016)	Constant drive (SUM2028)
	driving mode	1/10 scan	1/10 scan
	HUB type	HUB75	HUB75
	brightness of white balance	≥7000~7500cd/	≥7000~7500cd/
LED Cabinet	Diecast cabinets size	960x960mm	960x960mm
	Module quantity per cabinet	9pcs	9pcs
	Power supply	3.8 V/40A*3pcs	5V /60A*3pcs
	Maintenance mode	Front and back maintenance	Front and back maintenance
	Thermal discharge	fan 2pcs	fan 2pcs
	Cabinets Display Resolution	96*96DOTS	96*96DOTS
	The best viewing distance	4M~10M	4M~10M
	The best viewing angle	H:110° / W:110°	H:110° / W:110°
	Environment temperature	storage:-35°C +85°C working:-20°C +50°C	storage:-35°C +85°C working:-20°C +50°C
	Operating humidity	10-95% Relative humidity	10-95% Relative humidity
	temperature	100mm	100mm
Power	operating power	AC220V±10%	AC220V±10%
	Average Power consumption	100W/	240W/
	Max.Power consumption	300W/	628W/
	Current	≤20mA(single LED)	≤20mA(single LED)
Control	CPU	Pentium4 or above P4	Pentium4 or above P4
	Operation system	WIN98/2000/NT/XP/WIN7	WIN98/2000/NT/XP/WIN7

system	Control method	synchronization	synchronization
Main Technical parameter	Driving device	Constant drive IC	Constant drive IC
	Refresh frequency	≥1920Hz	≥1920Hz
	Grey scale/colors	4096 level/16.7M colors	4096 level/16.7M colors
	lifespan	≥100000Hours	≥100000Hours
	Power switch	Automatic switch	Automatic switch

P16 outdoor display advantage:

Easy:

Front-maintenance module is convenient for disassembly and assembly.

Low Windage:

Because the screen is ventilation, it reduce the windage and can save the structure costs.

Strong Adaptability:

Waterproof, dustproof, airproof and all-sealed design, IP67, 100% water proof.

Ultrathin Design:

The thickness of the whole cabinet is only 90mm and it is 50mm thinner than the routine cabinet.

Good Ventilation:

Its transmittance is over 7% and gain the homogeneous emission. No fans, no air conditioning and save cost.

Energy Saving:

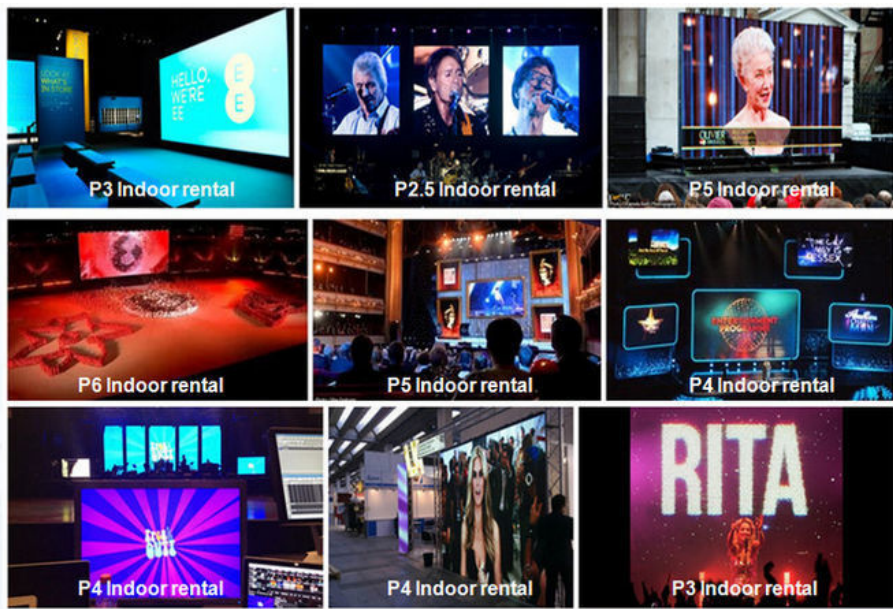
It can save more than 50% energy compared with the conventional display.

Application:

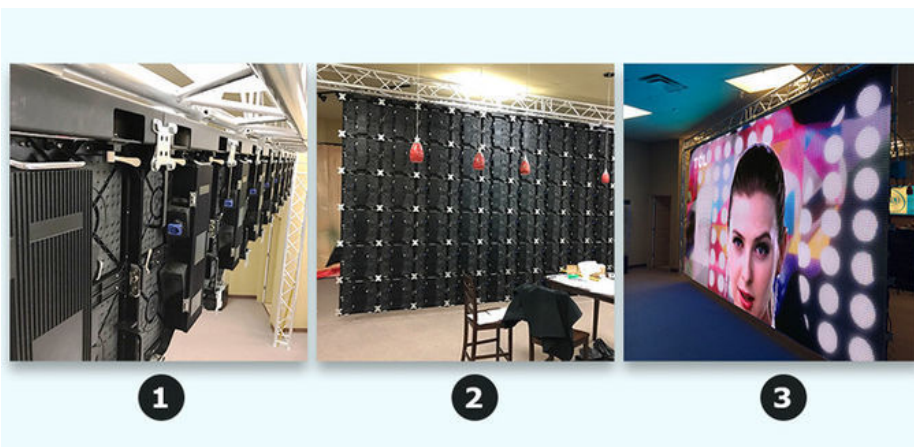
Widely used in stage, concert, live on TV, wedding, conference, ceremony gala, exhibition presentation, commercial advertising and other indoor rental events

Project Case:





Instation:



Company information

SHENZHEN SOL COLUR DISPLAY CO.,LTD. was established in December 2012,Is a leading LED display applications products and solutions provider,Specialized in LED research and development, manufacturing. Sales and servic,Dedicated to providing high-quality, high-performance LED applications and solutions for professional channel customers and end-users at home and abroad.

Our products have been widely used both at home and abroad. Since its foundation, we have become one of the best LED product and solution providers in the country through our unremitting efforts and have won the industry's highest recognition

The development of the company so far, the sales outlets throughout the country, the export products exported to more than 10 countries and regions, 3C, FCC, CE,IFA, IP65, IP68, IS9001, ROSH.AAA and other qualifications, product testing reports, patent certificate

Our factory:



From : Elena Duan

What's app no :
+8615019269218

SOL COLUR SHENZHEN SOL COLUR DISPLAY CO.,LTD

+86 13751136904

chenhao@sol-colour.com

sol-colour.com

2nd Floor, Building 8, Nangang Third Industrial Zone, TangtouCommunity, Shiyan Street, Bao'an District,
Shenzhen