

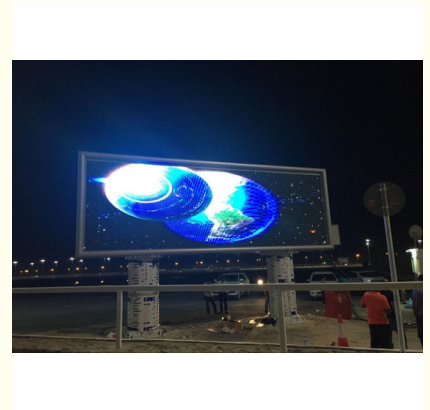


Pixel Pitch 10mm Outdoor Led Video Display Brightness 6800-7200 Scan Mode 1/4

Our Product Introduction

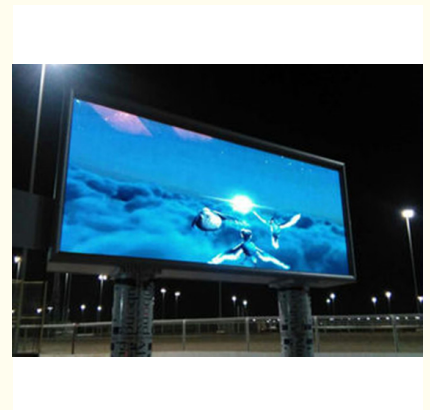
Basic Information

- Place of Origin: SHENZHEN, CHINA
- Brand Name: SOL COLUR
- Certification: CCC, RoHS, IP65
- Model Number: P10
- Minimum Order Quantity: 1 Square Meters
- Price: Negotiable
- Packaging Details: CARTON, WOODEN CASE, FLIGHT CASE
- Delivery Time: 15-20 days
- Payment Terms: L/C, D/A, D/P, T/T, Western Union
- Supply Ability: 5000 Square Meter/Square Meters per Month



Product Specification

- Module Size: 320mm*160mm
- Max Power: 35W
- Pixel Pitch: 10mm
- Weight: 0.37kg
- Scan Mode: 1/4
- Module Thickness: 22mm
- Highlight: 10mm Outdoor Led Video Display,
1/4 Outdoor Led Video Display,
7200 Outdoor Led Video Display



More Images



Product Description

Pixel Pitch 10mm Outdoor Led Video Display Brightness 4500-5500 Scan Mode 1/4

Product Description

1. Steady and reliable system: with strong anti-interference ability and long service life that can continually work for over 24 hours, and it's easy to operate the system.
2. High refresh rate, high brightness and high contrast which make the screen without any delay and smear phenomenon under directly sunlight.
3. Environment protection, antistatic, dust-proof, good heat dissipation, cost-effective.
4. Fit for the outdoor fixed commercial applications such as shopping mall, mobile truck, single/double pole mounted, wall mounted.
5. Convenient installation and maintenance of display modules.

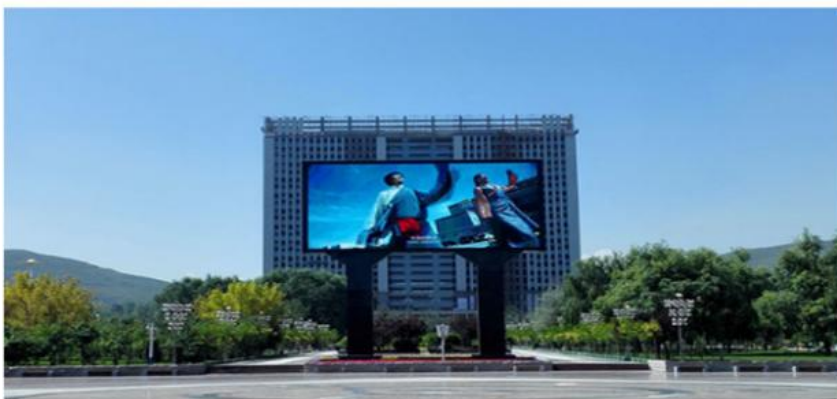
P10 outdoor technology parameters

	Item	Parameter
sUnit Module	Model Number	SF-SS10-4S-A
	Module size	320mm*160mm
	Pixel pitch	10mm
	Pixels Density	10000dots/m2
	Pixel configuration	1R1G1B
	Package mode	SMD3535
	Pixel resolution	32dots(W)*16dots(H)
	Max Power	35W
	Module thickness	22mm
	Weight	0.37kg
	Drive type	Constant drive
	Scan mode	1/4
	Port type	HUB75-A
	Brightness of white balance	≥6800 7200cd/m2
LED Cabinet	Dimension	960mm*960mm*100 mm
	Monomer Module Number	18pcs
	Power supply	5V/40A*4pcs
	Thermal discharge	fan 2pcs
	Pixel per cabinet	96mm*96mm
	Best viewing distance	8M 15M
	Best viewing angle	120°(W) 110°(H)
	Temperature	storage:-35°C +85°C working:-20°C +50°C
	Relative humidity	10%-95%
Power	Thickness	122mm
	Working voltage	AC220V±10%
	Average Power consumption	180W/
	Max Power consumption	≤480W/
Control system	Current	≤20mA(single LED)
	CPU	Pentium4 or above P4
	Operation system	WIN98/2000/NT/XP/WIN7
Main technical parameter	Control method	Synchronization
	Driving device	Constant drive IC
	Refresh frequency	≥1920HZ
	Grey scale/colors	4096gray level/16.7M colors
	MTBF	≥9000hours
	Power switch	Automatic switch
	Display Mode	≥800*600/1024*768

Features:

1. Good quality and reasonable price.
2. High Brightness and Refresh Rate.
3. Energy Saving.
4. Good display effect and vivid image.
5. Efficient After-sales.
- 6 Low consumption, stable performance, highly durable.

Project Show:



SOL COLUR SHENZHEN SOL COLUR DISPLAY CO.,LTD



+86 13751136904



chenhao@sol-colour.com



sol-colur.com

2nd Floor, Building 8, Nangang Third Industrial Zone, TangtouCommunity, Shiyan Street, Bao'an District,
Shenzhen