



P10 Outdoor SMD LED Display Module Size 320mm*160mm 1R1G1B Pixel Configuration

Our Product Introduction

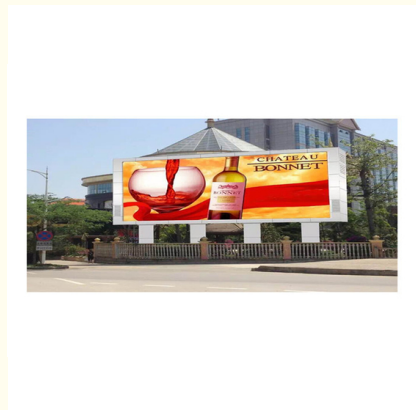
Basic Information

- Place of Origin: SHENZHEN, CHINA
- Brand Name: SOL COLUR
- Certification: CCC, IP65, ROHS
- Model Number: P10
- Minimum Order Quantity: 1 Square Meters
- Price: Negotiable
- Packaging Details: CARTON, WOODEN CASE, FLIGHT CASE
- Delivery Time: 15-20 days
- Payment Terms: L/C, D/A, D/P, T/T, Western Union
- Supply Ability: 5000 Square Meter/Square Meters per Month



Product Specification

- Module Size: 320mm*160mm
- Pixel Configuration: 1R1G1B
- Max Power: 35W
- Weight: 0.37kg
- Scan Mode: 1/4
- Module Thickness: 22mm
- Highlight: 320mm*160mm Outdoor SMD LED Display Module, 1R1G1B Outdoor SMD LED Display Module, P10 Outdoor SMD LED Display Module



for more products please visit us on sol-colur.com

Product Description

P10 Outdoor SMD LED Display Module Size 320mm*160mm 1R1G1B Pixel Configuration

Product Description

1. Ultra high brightness,low attenuation,high reliability and weather ability.
2. High quality LED chip and high anti-static electricity capacity.
3. High contrast ratio.
4. Large viewing angle and smooth displaying provide excellent visual effect from every angle.
5. High refresh rate.
- 6.After a dustproof and waterproof tested to reach its target IP65. Brightness of SMD P10 Full Color Outdoor LED Display is more than 6500 nits.

P10 outdoor technology parameters

	Item	Parameter
sUnit Module	Model Number	SF-SS10-4S-A
	Module size	320mm*160mm
	Pixel pitch	10mm
	Pixels Density	10000dots/m2
	Pixel configuration	1R1G1B
	Package mode	SMD3535
	Pixel resolution	32dots(W)*16dots(H)
	Max Power	35W
	Module thickness	22mm
	Weight	0.37kg
	Drive type	Constant drive
	Scan mode	1/4
	Port type	HUB75-A
	Brightness of white balance	≥6800 7200cd/m2
LED Cabinet	Dimension	960mm*960mm*100 mm
	Monomer Module Number	18pcs
	Power supply	5V/40A*4pcs
	Thermal discharge	fan 2pcs
	Pixel per cabinet	96mm*96mm
	Best viewing distance	8M 15M
	Best viewing angle	120°(W) 110°(H)
	Temperature	storage:-35°C +85°C working:-20°C +50°C
	Relative humidity	10%-95%
Power	Thickness	122mm
	Working voltage	AC220V±10%
	Average Power consumption	180W/
	Max Power consumption	≤480W/
Control system	Current	≤20mA(single LED)
	CPU	Pentium4 or above P4
	Operation system	WIN98/2000/NT/XP/WIN7
Main technical parameter	Control method	Synchronization
	Driving device	Constant drive IC
	Refresh frequency	≥1200HZ
	Grey scale/colors	4096gray level/16.7M colors
	MTBF	≥9000hours
	Power switch	Automatic switch
	Display Mode	≥800*600/1024*768

Features:

1. Excellent visual effect, better viewing effect for text and graphic or video
2. Large viewing angle,both H/V can reach 110 degree;getting vivid effect within any position of the viewing range;
3. High contrast ratio and good evenness, high uniformity,without mosaic
4. Resist of the high temperature and antioxidation and anti-static;
5. Any led in each pixel can be respectively replaced, which reduce the cost of the display maintainance.
6. Long using life & MTBF100000hour

Project Show:



SOL COLUR SHENZHEN SOL COLUR DISPLAY CO.,LTD

+86 13751136904

chenhao@sol-colour.com

sol-colur.com

2nd Floor, Building 8, Nangang Third Industrial Zone, TangtouCommunity, Shiyan Street, Bao'an District,
Shenzhen