



## Floor Standing Small Pixel Pitch LED Display P1.667 High Contrast Ratio

### Our Product Introduction

#### Basic Information

- Place of Origin: SHENZHEN CHINA
- Brand Name: SC
- Certification: ROHS, FCC.3C,ISO9001
- Model Number: P1.667
- Minimum Order Quantity: 1 Square Meters
- Price: Negotiable
- Packaging Details: Wooden box,Flight Case
- Delivery Time: 10 days after received deposit
- Payment Terms: L/C, D/A, D/P, T/T, Western Union
- Supply Ability: 5000 Square Meters per Month



#### Product Specification

- Usage: Indoor
- Warranty: 2 Years
- Brightness: 1800nits
- Pixel Configuration: 1R1G1B
- LED Lamp: Nationstar 1010
- Refresh Rate: 1000HZ
- Model Number: P1.667
- Place Of Origin: Shenzhen China
- IC: MBI5153
- Scan Mode: 30S
- Highlight: Floor Standing p1.667 led display,  
High Contrast p1.667 led display,  
Floor Standing small pitch led display

## Product Description

Floor Standing Small Pixel Pitch LED Display Wide Viewing Angles P1.667 High Contrast Ratio

### Product Features:

- 1) Wide viewing angles
- 2) Seamless and lightweight
- 3) Dynamic scanning with truer, more stable pictures( no flickering)
- 4) Modular design for easy installation and maintenance
- 5) Consistent uniformity over time
- 6) Brilliant colors, breathtaking greyscales
- 7) Operating software compatible with widely available software
- 8) Remove the tools, improve the serviceability

### Advantage:

1. Wide Applicability: Stage rental events, entertainment, indoor and outdoor environment.
2. Light Weight:Using aluminum profile material, the cabinet weight is only 4.5 kg.
3. High Contrast Ratio: novel design of mask,contrast ratio can reach 2800.
4. Quiet:Direct current fan only has little noise.
5. Thin:the thickest part of cabinet is only 75mm.
6. High Precision:each cabinet of precision deviation <0.1mm.
7. High Refreshing:Usually it can reach 2800Hz,but it can reach 3200Hz if you use appropriate IC.
8. Convenient and Fast Installation.
9. Best Cabinet Size: 400mm\*300mm(Customize Size)

### Application:

Outdoor full color LED display could be used in outdoor environment such as airport, highway, cultural or relax square, commercial walking street, residential sub-district, downtown, with various real-time signal sources and the speciality of waterproof, dustproof, antistatic, its purpose is to propagandize outdoor advertising or play the important news or events or TV program etc.

### Product Specification:

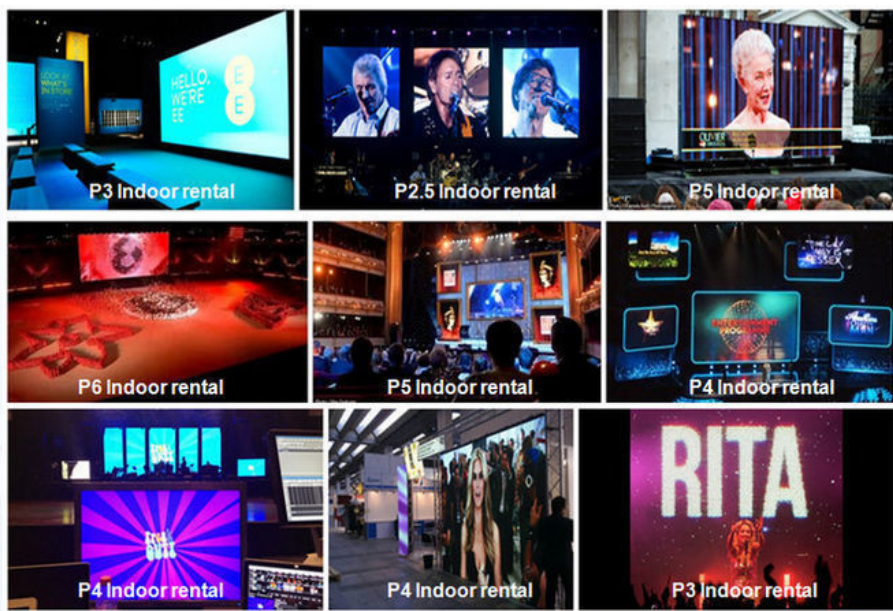
Items	Parameter
Pixel Pitch	PH1.677mm
Cabinet Resolution(W*H)	240*180
Pixel Configuration	1R1G1B(in 3 n 1)
LED Encapsulation	SMD 1010
Pixel Density	360000 Pixel/ m2
Driving Method	1/30 Scan
Refresh Frequency	≥2880Hz (Support High refresh rate, depend on the system configuration)
Driver IC	MBI5153
Grey Scale	14Bit (depending on the system and IC configuration)
Cabinet Size	400*300mm
White balance Brightness	≥800cd/ m2 (adjustable)
Color Temperature	8000K±500 (adjustable)
Viewing Angle	Horizontal 140° Vertical 120°
Optimal Viewing Distance	>2m
Working Voltage	AC 220V/110V ±10%
Module voltage	DC4.2V
Max Power Consumption	100W/PCS
Avg. Power Consumption	50W/PCS
Life span	100000hours

Operating Temperature	-10°C~ 50°C
Net weight	4.8Kg/pcs

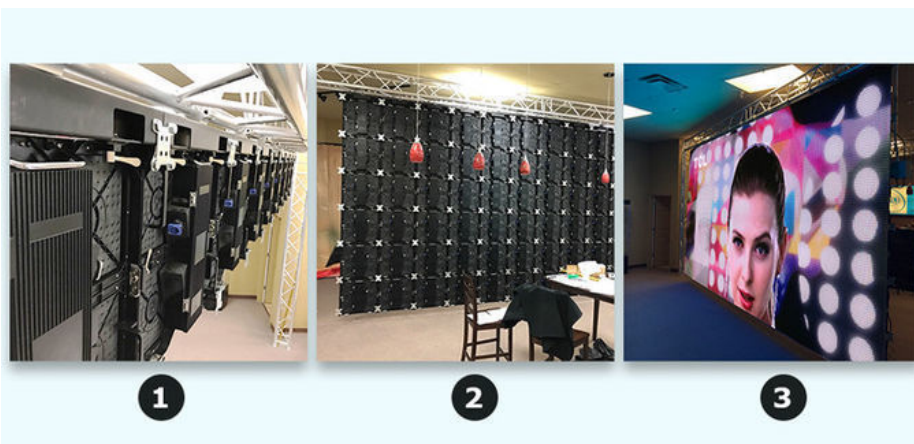
# Product Show







Instation:



Our factory:



#### Company information

SHENZHEN SOL COLUR DISPLAY CO.,LTD. was established in December 2012,Is a leading LED display applications products and solutions provider,Specialized in LED research and development, manufacturing. Sales and servic,Dedicated to providing high-quality, high-performance LED applications and solutions for professional channel customers and end-users at home and abroad.

Our products have been widely used both at home and abroad. Since its foundation, we have become one of the best LED product and solution providers in the country through our unremitting efforts and have won the industry's highest recognition

The development of the company so far, the sales outlets throughout the country, the export products exported to more than 10 countries and regions, 3C, FCC, CE.IFA, IP65, IP68, IS9001, ROHS.AAA and other qualifications, product testing reports, patent certificate

From : Elena Duan
What's app no : +8615019269218

**SOL COLUR SHENZHEN SOL COLUR DISPLAY CO.,LTD**



+86 13751136904



chenhao@sol-colour.com



sol-colur.com

2nd Floor, Building 8, Nangang Third Industrial Zone, TangtouCommunity, Shiyan Street, Bao'an District,  
Shenzhen