



Vivid Image Led Stage Screen Indoor P2.5 Led Display 1920HZ Refresh Frequency

Our Product Introduction

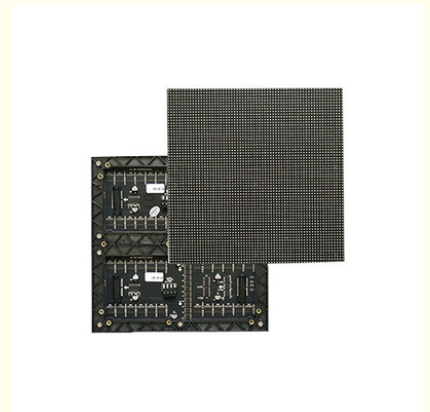
Basic Information

- Place of Origin: SHEN ZHEN CHINA
- Brand Name: SC
- Certification: CCC CE IP65 ROSH
- Model Number: P2.5
- Minimum Order Quantity: Square Meters / 1 Piece
- Price: USD14.3~26.76/PCS
- Packaging Details: 5 Wooden box, Flight Case
- Delivery Time: 10 days after received deposit
- Payment Terms: L/C, D/A, D/P, T/T, Western Union
- Supply Ability: 5000 Square Meters per Month

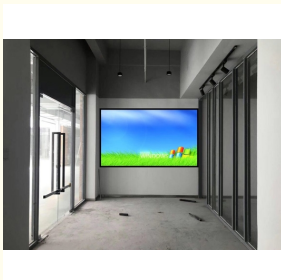


Product Specification

- Usage: Indoor
- Module Size: 160mm*160mm
- Refresh Frequency: 1920HZ
- Module Scan: 32 Scan
- Brightness: 1000
- Place Of Origin: Shenzhen, China
- High Contrast Ratio: 4000:1
- Pixel L ED: 2121
- White Balance Brightness (≥ 1500 Cd/m²):
- Highlight: Indoor P2.5 Led Display 1920HZ ,
Vivid Image Indoor P2.5 Led Display ,
Led Stage Screen 1920HZ



More Images



for more products please visit us on sol-colur.com

Product Description

Clear Vivid Image Led Stage Screen , P2.5 Led Video Display Panels 1920HZ Refresh Frequency

Features & Technical Specification:

The list of available Models of our LED display/screen/panel/sign

PH4mm,5mm,6mm,7.62mm,8mm,10mm,12mm,12.5mm,14mm,16mm,18mm,20mm,25mm,31.25mm 37.5mm.

1. Wide application field & short ROI time:

commercial advertising LED display screen, Stadium perimeter LED display screen, Mobile trailer LED display screen for mobile media, shopping mall LED display screen for logo showing, bank&stock exchange LED display screen for rates showing, train & bus station LED display screen, air port LED display screen, telecommunication LED display screen system for information showing and instruction

2. High Contrast ratio: 4000:1

Which is a very high level to ensure a vivid image of our LED display screen system.

3. Clear vivid image quality:

Even in direct, full-on sunlight to ensure you attract more audience to get short ROI of your LED display screen's investment.

4. Long-term Brightness:

7000-nit brightness (for outdoor full color)(2000 nits brightness for indoor full color) capacity throughout product lifetime of the LED display screen.

5. Easy Installation & Using:

easy & simple installation interface and user friendly software to ensure the user friendly interface of the LED display screen system

6. Convenient Servicing:

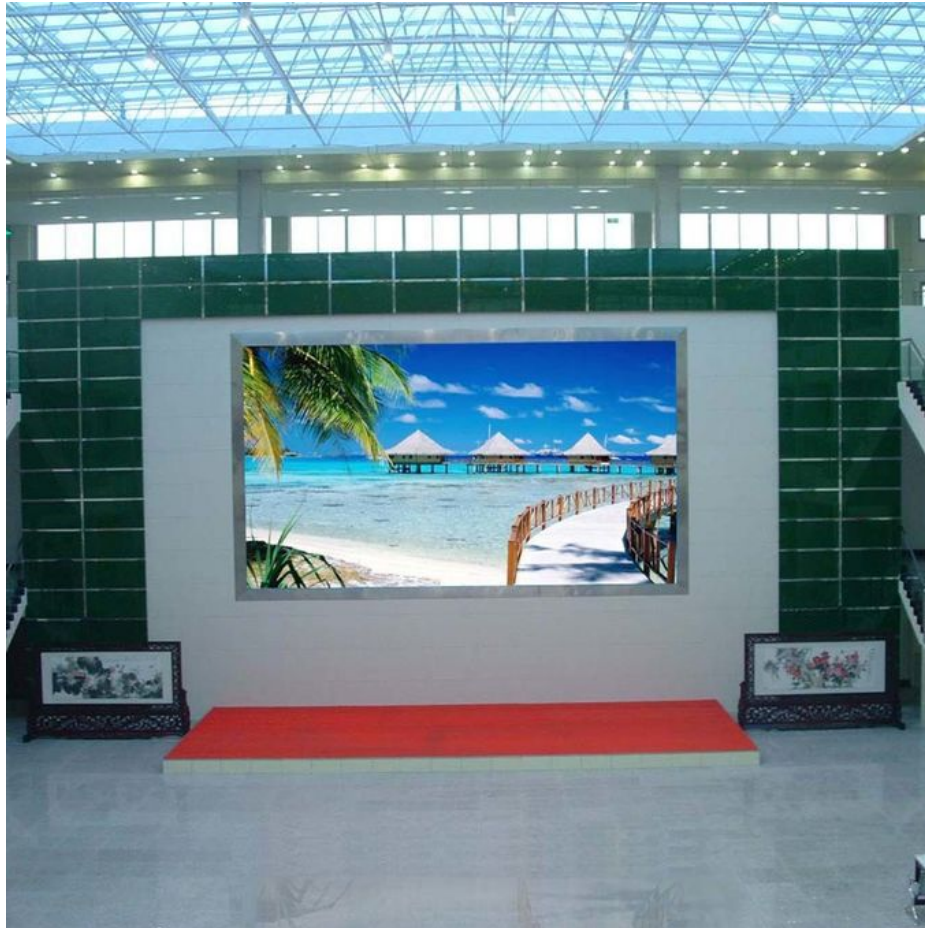
Front and rear cabinet access makes the maintenance work very convenient and low cost to help you concentrate more time and energy on your main marketing promotion business.

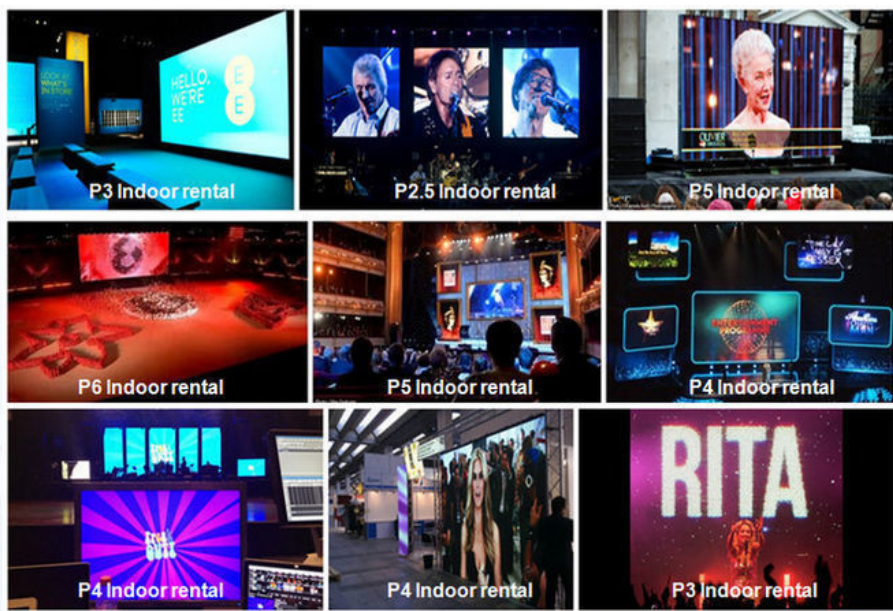
Specifications:

| | |
|---------------------------------|---|
| Product model number | Mled-PH4-1 |
| 1.Pixel | |
| Pixel L ED | 2121 |
| Pixel Configuration | 1 R, 1G , 1B |
| Wave length (nm) | R: 626-628 , G: 518-520 , B: 466-468 |
| Pixels Pitch (mm) | 4 |
| 2 . Module | |
| Module Size (mm) | 128 * 256 * 20 |
| Module Pixels (dot) | 32 * 64 |
| 3.Unit box | |
| Module quantities in a unit box | 2 (L) * 4 (H) |
| Unit box size (mm) | 512 (L) * 512 (H) * 80 |
| Unit box Pixels (dot) | 128 * 128 |
| Unit box material | Aluminum |
| Unit box weight (kg) | Aluminum : 10 |
| 4.Packaging | |
| Packing Way | Two unit boxes packed into one |
| Packing box material | Wooden case or Flight box |
| 5.electricity parameter | |
| Pixel density (dots/ m 2) | 62500 |
| White Balance | ≥ 1500 |
| Brightness (cd/m 2) | |
| Color temperature (K) | 5000-9500 (choice by user) |
| Brightness Adjusted | 100 grade by software or by Auto-optic induced. |
| View Angel | Horizontal 120 ° ; Vertical 120 ° |
| Best viewing distance (m) | 16-150 |
| Communication distance (m) | Internet Wire : 120 Fiber Cable : 1000 |
| Screen work Method | 1/32 scan |
| LED driving method | Constant driving current |
| Gray Grades | 16384 levels for each color |
| Display Color | 4 , 398 , 046 , 511 , 104 |
| Refresh Frequency (Hz) | ≥2000 |
| Picture display method | Dots to dots display synchronized with CRT |

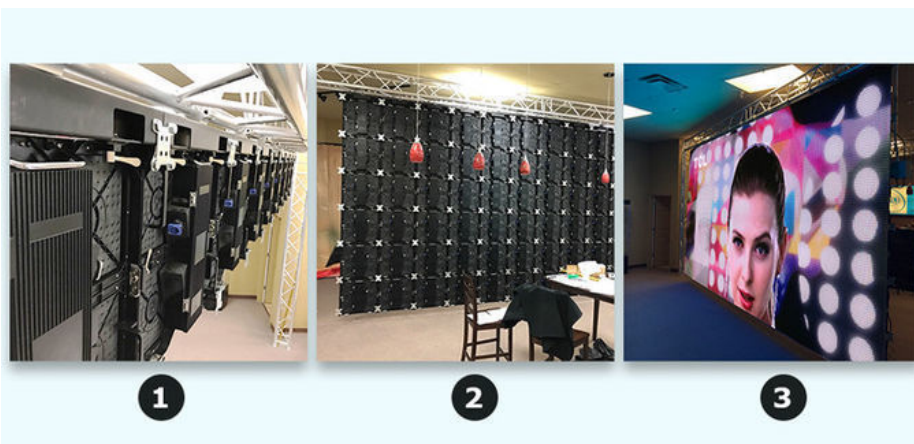
| | |
|------------------------------|---|
| Signal interface | DVI |
| Input signal | Video : PAL/NTSC optioned . VGA, Svideo, DVD, TV |
| Display format | 800 * 600 , 1024 * 768 , 1280 * 1024 |
| Software | Support windows series system |
| Protection grades | IP 21 |
| Working temperature (°C) | -20 +60 |
| Humidity (RH) | Up to 95 |
| Stored temperature (°C) | -30 +70 |
| Screen Lifetime(hours) | ≥100, 000 |
| Out of controlled dots | ≤3/10, 000 (Out of controlled dots means the pixels of which the brightness and the wave length are both >10% depart to the normal one) |
| Whole display flatnes | Less than 1mm Juncture |
| Maintance way | Back-maintained or front-maintained, modules displaced |
| Switch power supply | Switch power supply (include CE/GS or UL/CSA certificate) 110V/60HZ , 220V/50HZ |
| Power Consumption (w /m 2) | Max : 600 , Average: ≥ 300 |

Project Case:





Instation:



Our factory:



Company information

SHENZHEN SOL COLUR DISPLAY CO.,LTD. was established in December 2012,Is a leading LED display applications products and solutions provider,Specialized in LED research and development, manufacturing. Sales and servic,Dedicated to providing high-quality, high-performance LED applications and solutions for professional channel customers and end-users at home and abroad.

Our products have been widely used both at home and abroad. Since its foundation, we have become one of the best LED product and solution providers in the country through our unremitting efforts and have won the industry's highest recognition

The development of the company so far, the sales outlets throughout the country, the export products exported to more than 10 countries and regions, 3C, FCC, CE.IFA, IP65, IP68, IS9001, ROHS.AAA and other qualifications, product testing reports, patent certificate

| |
|-----------------------------------|
| From : Elena Duan |
| What's app no : +8615019269218 |

SOL COLUR SHENZHEN SOL COLUR DISPLAY CO.,LTD



+86 13751136904



chenhao@sol-colour.com



sol-colur.com

2nd Floor, Building 8, Nangang Third Industrial Zone, TangtouCommunity, Shiyan Street, Bao'an District,
Shenzhen