



SMD2121 4K Led Video Wall Fixed Led Screen P3 Indoor High Resolution

Our Product Introduction

Basic Information

- Place of Origin: SHENZHEN
- Brand Name: SC
- Certification: CE,3C,FCC,ROSH,ISO9001
- Model Number: P3 Indoor
- Minimum Order Quantity: 1 Square Meters
- Price: USD14.3~17.67/PCS
- Packaging Details: Wooden case,flight case and carton case
- Delivery Time: 10 days after received deposit
- Payment Terms: D/A, D/P, T/T, Western Union
- Supply Ability: 5000 Square Meters per Month



Product Specification

- Color: Full Color
- Uasge: Indoor
- Package Mode: SMD Nationstar
- Physical Density: 111111/m2
- Driver IC: MBI5124
- Pixel Configuration: 1R1G1B
- Highlight: **SMD2121 4K Led Video Wall,
Led Screen P3 Indoor High Resolution,
SMD2121 Led Screen P3 Indoor**

for more products please visit us on sol-colur.com

Product Description

Fixed 4K HD Indoor Full Color LED Display P3 Die - Cast Aluminum For Sports / Stadium

Product Features:

- 1, Pixel density is 111111 dots per square meter, high resolution brings HD visual effect.
- 2, Adopts black SMD2121, higher contrast ratio, the display effect is very good.
- 3, IC MBI5124 is used, high refresh rate, high grey scale level and high accurate color consistency guarantee the vivid pictures and perfect videos.
- 4, Die-cast aluminum with CNC is finished, the dimension tolerance of less than 0.01mm, and module shaping one time, the machining accuracy of + 0.01mm, easy to realize seamless splicing.
- 5, There are three handles for lifting cabinets, aviation plug and fast lock on each side is equipped, makes very convenient and comfortable for fast installation by one person without tools, besides guarantee seamless installation and keep smoothly

Application:

Widely used in stage, concert, live on TV, wedding, conference and commercial advertising etc.

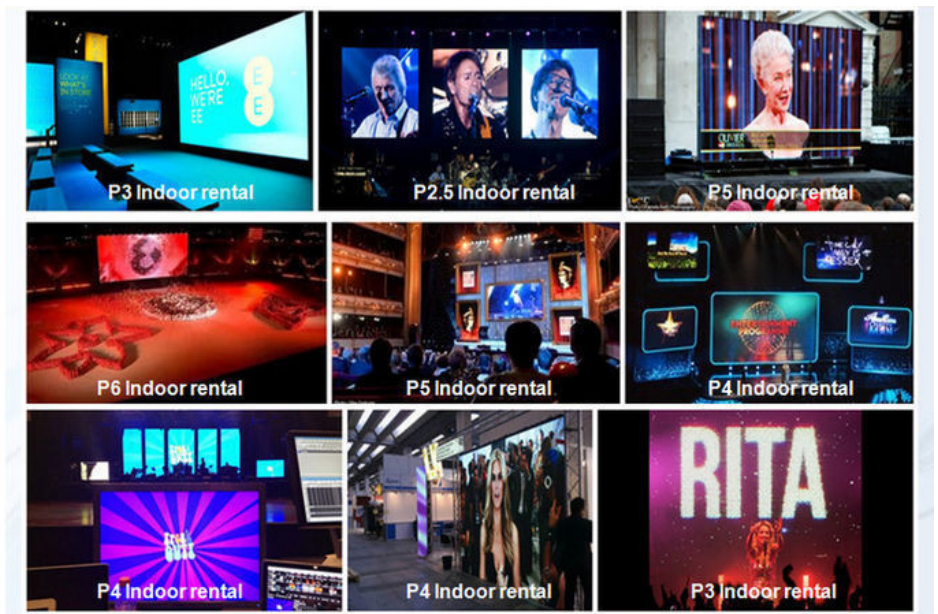
Description

Simple cabinet, cabinet size 960mmx960mm, module size 320mm*320mm, minimum viewing distance 10m, special for sports and stadium showing events showing, Made in China

Technical specification

*Specifications of the module		
Technical parameters	UNIT	Parameters values
Pixel pitch	MM	3
Panel size	MM	L192*H96*T13
Physical density	/M ²	111111
Pixel configuration	R/G/B	1,1,1
Driving method		Constant current 1/16scan
LED Encapsulation	SMD	2121
Display resolution)	DOTS	64X32=2048
Module weight	KG	0.18
Module port		HUB75-B
Module working voltage	VDC	5
Module consumption	W	30
*Specifications of LED cabinet		
Viewing angle	Deg.	140°
Option distance	M	3-45
Driving device		16016
Every square metre module	PCS	54.25
Maximum power	W/ M ²	900
Frame Frequency	HZ/S	≥60
Refresh frequency	HZ/S	≥320
Equilibrium brightness	CD/ M ²	≥1200
Working environment temperature	°C	-10~60
Working environment humidity	RH	10% 70%
Display working voltage	VAC	AC46 54HZ,220V±15%/110V±15%
Colour temperature		8500K-11500K
Gray scale/color		≥16.7M color
Input signal		RF S-Video RGB etc
Control system		PCTV nonlinearity card,DVI display card,Linsn control system
Mean free error time	HOURS	5000
Life	HOURS	100000
Lamp failure frequency		0.0001
Antijam		IEC801
Safety		GB4793
Resist the electricity		1500V last 1min No breakdown
Steel box weight	KG/ M ²	40(standard steel box)
Earth leakage current	mA	
IP rating		The back IP40, The front IP50

Project Cases



Instation:



Our factory:



Company information

SHENZHEN SOL COLUR DISPLAY CO.,LTD. was established in December 2012,Is a leading LED display applications products and solutions provider,Specialized in LED research and development, manufacturing. Sales and service,Dedicated to providing high-quality, high-performance LED applications and solutions for professional channel customers and end-users at home and abroad.

Our products have been widely used both at home and abroad. Since its foundation, we have become one of the best LED product and solution providers in the country through our unremitting efforts and have won the industry's highest recognition

The development of the company so far, the sales outlets throughout the country, the export products exported to more than 10 countries and regions, 3C, FCC, CE,IFA, IP65, IP68, IS9001, ROHS.AAA and other qualifications, product testing reports, patent certificate

From : Elena Duan

What's app no :
+8615019269218

SOL COLUR SHENZHEN SOL COLUR DISPLAY CO.,LTD



+86 13751136904



chenhao@sol-colour.com



sol-colour.com

2nd Floor, Building 8, Nangang Third Industrial Zone, TangtouCommunity, Shiyao Street, Bao'an District, Shenzhen