



## 1920HZ Indoor Advertising Led Display Screen P4 Synchronization Control For Concert

### Our Product Introduction

#### Basic Information

- Place of Origin: SHENZHEN CHINA
- Brand Name: SC
- Certification: CCC IP68 CE ISO9001 ROHS
- Model Number: Indoor SMD P4
- Minimum Order Quantity: Square Meters / 1 Piece
- Price: Negotiable
- Packaging Details: Wooden box, Flight Case
- Delivery Time: 10 days after received deposit
- Payment Terms: L/C, D/A, D/P, T/T, Western Union
- Supply Ability: 5000 Square Meters per Month



#### Product Specification

- Module Size: 320x160mm
- Pixel Pitch: 4mm
- Pixel Density: 62500dots/
- Encapsulation Of Led: SMD1921
- Module Max Power Consumption: 25W
- Average Power Consumption: 100W/
- Operating Power: AC220V±10%
- Operation System: WIN98/2000/NT/XP/WIN7
- Highlight: **P4 Indoor Advertising Led Display Screen ,  
1920HZ Indoor Advertising Led Display Screen ,  
Concert Indoor Advertising Led Display Screen**



## Product Description

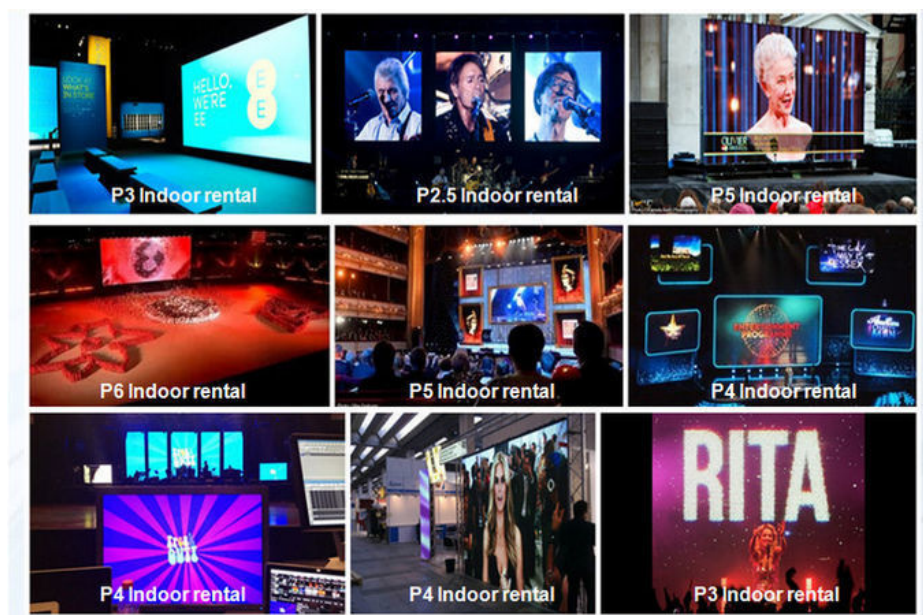
### 1920HZ Indoor Advertising Led Display Screen P4 Synchronization Control For Concert

Advantage
1.Big LED chip
2.high brightness:5500~6000cd/m2
3.Gold wire encapsulated
4.Lower power consumption Average Power consumption:100W/
5.Lower heating produced
6. Longer life span ≥100000Hours
7. Wider viewing angle H:110° / W:110°,

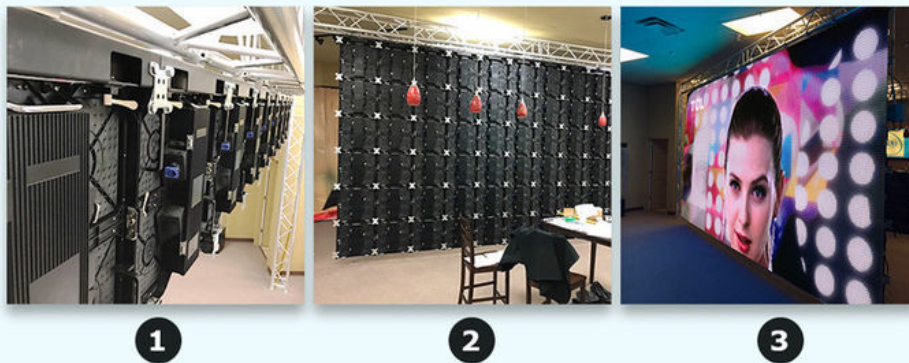
### Product Specification:

	Item	Energy-saving	General
Unit Module	Model Number	SC-P4(1921)-80*40-4L10S-V1.6	SC-P4(1921)-80*40-4L10S-V1.6
	module size	320x160mm	320x160mm
	pixel pitch	4mm	4mm
	Pixel density	62500dots/	62500dots/
	Pixel configuration	1R1G1B	1R1G1B
	Encapsulation of led	SMD1921	SMD1921
	Mudule Max Power consumption	25W	33W
	Mudule Display Resolution	80DOTS(W) * 40DOTS(H)	80DOTS(W) * 40DOTS(H)
	Thickness of a mudule	16mm	16mm
	Weight of a mudule	0.58kgs	0.58kgs
	Drive Type	Constant drive (SUM2016)	Constant drive (SUM2028)
	driving mode	1/10 scan	1/10 scan
	HUB type	HUB75	HUB75
	brightness of white balance	≥5500~6000cd/	≥5500~6000cd/
LED Cabinet	Diecast cabinets size	960x960mm	960x960mm
	Module quantity per cabinet	18pcs	18pcs
	Power supply	3.8 V/40A*3pcs	5V V/60A*3pcs
	Maintenance mode	back maintenance	back maintenance
	Thermal discharge	fan 2pcs	fan 2pcs
	Cabinets Display Resolution	96*96DOTS	96*96DOTS
	The best viewing distance	4M~10M	4M~10M
	The best viewing angle	H:110° / W:110°	H:110° / W:110°

	Environment temperature	storage:-35℃ +85℃ working:-20℃ +50℃	storage:-35℃ +85℃ working:-20℃ +50℃
	Operating humidity	10-95% Relative humidity	10-95% Relative humidity
	temperature	100mm	100mm
Power	operating power	AC220V±10%	AC220V±10%
	Average Power consumption	165W/	325W/
	Max.Power consumption	494W/	975W/
	Current	≤20mA(single LED)	≤20mA(single LED)
Control system	CPU	Pentium4 or above P4	Pentium4 or above P4
	Operation system	WIN98/2000/NT/XP/WIN7	WIN98/2000/NT/XP/WIN7
	Control method	synchronization	synchronization
Main Technical parameter	Driving device	Constant drive IC	Constant drive IC
	Refresh frequency	≥1920Hz	≥1920Hz
	Grey scale/colors	4096 level/16.7M colors	4096 level/16.7M colors
	lifespan	≥100000Hours	≥100000Hours
	Power switch	Automatic switch	Automatic switch



Instation:



**Our factory:**



#### Company information

SHENZHEN SOL COLUR DISPLAY CO.,LTD. was established in December 2012,Is a leading LED display applications products and solutions provider,Specialized in LED research and development, manufacturing. Sales and service,Dedicated to providing high-quality, high-performance LED applications and solutions for professional channel customers and end-users at home and abroad.

Our products have been widely used both at home and abroad. Since its foundation, we have become one of the best LED product and solution providers in the country through our unremitting efforts and have won the industry's highest recognition

The development of the company so far, the sales outlets throughout the country, the export products exported to more than 10 countries and regions, 3C, FCC, CE,IFA, IP65, IP68, IS9001, ROHS.AAA and other qualifications, product testing reports, patent certificate

From : Elena Duan

What's app no :  
+8615019269218

**SOL COLUR SHENZHEN SOL COLUR DISPLAY CO.,LTD**

+86 13751136904

chenhao@sol-colour.com

sol-colour.com

2nd Floor, Building 8, Nangang Third Industrial Zone, TangtouCommunity, Shiyan Street, Bao'an District, Shenzhen