



28459dots/ P5.9259 SMD Indoor LED Screen Panel Module Size 320x320mm SMD2727 200W/ consumption

Our Product Introduction

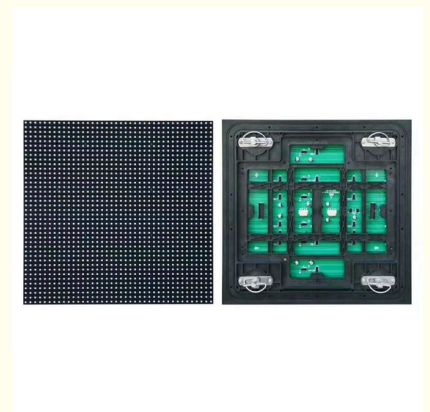
Basic Information

- Place of Origin: SHENZHEN
- Brand Name: SC
- Certification: CE,3C,FCC,ROSH
- Model Number: P5.9259 Indoor
- Minimum Order Quantity: 1 Square Meters
- Price: Negotiable
- Packaging Details: Wooden box,Flight Case
- Delivery Time: 10 days after received deposit
- Payment Terms: L/C, D/A, D/P, T/T



Product Specification

- Module Size: 320x320mm
- Pixel Pitch: 5.92mm
- Pixel Density: 28459dots/
- Pixel Configuration: 1R1G1B
- Encapsulation Of Led: SMD2727
- Brightness Of White Balance: $\geq 5500 \sim 6000 \text{cd/}$
- Average Power Consumption: 200W/
- Current: $\leq 20 \text{mA}(\text{single LED})$
- Highlight: 320x320mm P5.9259 LED Screen Panel,
200W/ consumption P5.9259 LED Screen Panel,
28459dots/ P5.9259 LED Screen Panel



More Images



Product Description

P5.9259 SMD Indoor LED Screen Panel

Parameter

Product Quick Details:

- 1, Pixel pitch: 5.9259mm
- 2, refresh rate could reach 1920Hz
- 3, magnesium aluminum cabinet 960*960mm

Product Features:

- 1, Fanless design , natural heat dissipation, and it's completely quiet;
- 2, Fast installation and dismantle with fast locks;
- 3, Front service structure design, with front service tool, you can do the replacing yourself easily.

Specifications of P5.9259

	Item	Energy-saving	General
Unit Module	Model Number	SC-P5.9259(27*27)54*54-2L5S-V1.6	SC-P5.9259(27*27)54*54-2L5S-V1.6
	module size	320x320mm	320x320mm
	pixel pitch	5.92mm	5.92mm
	Pixel density	28459dots/m2	28459dots/m2
	Pixel configuration	1R1G1B	1R1G1B
	Encapsulation of led	SMD2727	SMD2727
	Mudule Max Power consumption	46W	66W
	Mudule Display Resolution	54DOTS(W) * 54DOTS(H)	54DOTS(W) * 54DOTS(H)
	Thickness of a mudule	16mm	16mm
	Weight of a mudule	1.5kgs	1.5kgs
	Drive Type	Constant drive (SUM2028)	Constant drive (SUM2028)
	driving mode	1/9 scan	1/9 scan
	HUB type	HUB75	HUB75
	brightness of white balance	≥5500~6000cd/m2	≥5500~6000cd/m2
LED Cabinet	Diecast cabinets size	960x960mm	960x960mm
	Module quantity per cabinet	9pcs	9pcs
	Power supply	3 V/40A*3pcs	5V V/60A*3pcs
	Maintenance mode	Front and back maintenance	Front and back maintenance
	Thermal discharge	fan 2pcs	fan 2pcs
	Cabinets Display Resolution	960mm*960mm	960mm*960mm
	The best viewing distance	4M~10M	4M~10M
	The best viewing angle	H:110° / W:110°	H:110° / W:110°
	Environment temperature	storage:-35°C +85°C working:-20°C +50°C	storage:-35°C +85°C working:-20°C +50°C
	Operating humidity	10-95% Relative humidity	10-95% Relative humidity
	temperature	100mm	100mm
	operating power	AC220V±10%	AC220V±10%
	Average Power consumption	200W/	325W/

Power	Max.Power consumption	608W/	935W/
	Current	≤20mA(single LED)	≤20mA(single LED)
Control system	CPU	Pentium4 or above P4	Pentium4 or above P4
	Operation system	WIN98/2000/NT/XP/WIN7	WIN98/2000/NT/XP/WIN7
	Control method	synchronization	synchronization
Main Technical parameter	Driving device	Constant drive IC	Constant drive IC
	Refresh frequency	≥1920Hz	≥1920Hz
	Grey scale/colors	4096 level/16.7M colors	4096 level/16.7M colors
	lifespan	≥100000Hours	≥100000Hours
	Power switch	Automatic switch	Automatic switch

Application

Factory New Led Rental Die-casting Led Display P5.9259 Led Wall Panel, P5.9259 Rental Indoor Led Display, High Quality Shenzhen Factory New Led Rental Die-casting Led Display P5.9259,Indoor Small Spacing Led Display,Indoor Led Magnesium aluminum alloy control box

Description

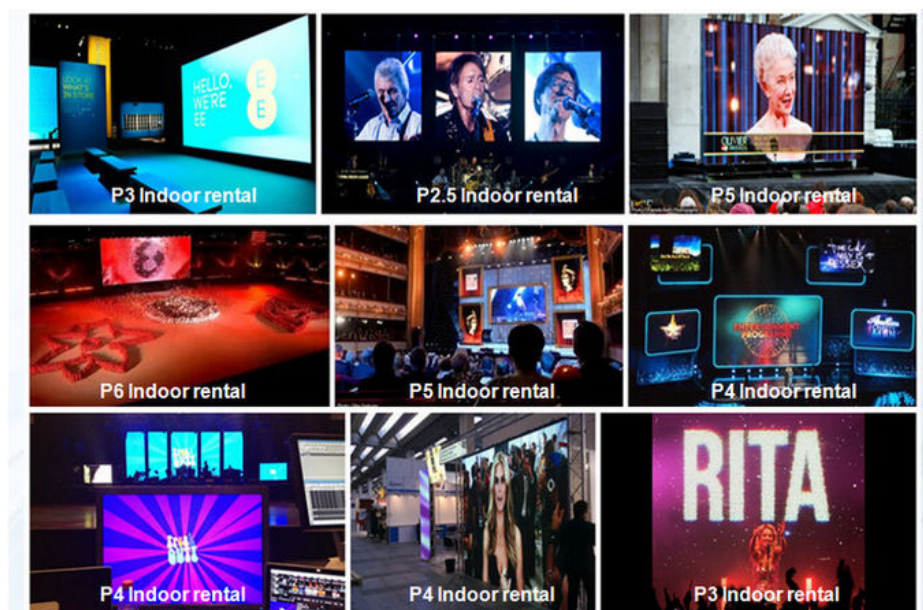
1. Excellent design should be easy to understood, the product will talk for itself, cancelling the necessity of detailed explain.
2. Seamless stitching: With our special connector design it is easy to reduce gaps while installing, creating a perfect display.
3. Adopt the latest anti-collision technology, make a more stable cabinet during rental events, make a longer life span.
4. Magnesium aluminum alloy control box, adapt to all kinds of weather.
5. Customized Arc design: bevel edge cabinet design according to customer requirements makes Arc screen assembling.
6. Gapless connection: under 0.1 mm tolerance gap between cabinet and module, under 0.2mm tolerance gap between cabinets.

Company information

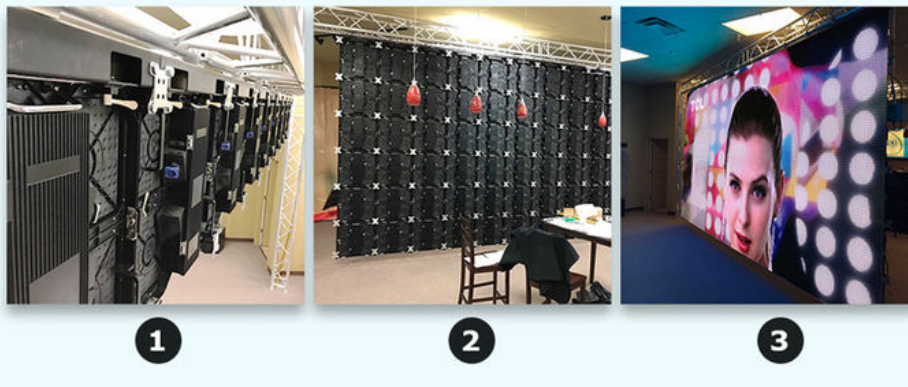
SHENZHEN SOL COLUR DISPLAY CO.,LTD. was established in December 2012,Is a leading LED display applications products and solutions provider.Specialized in LED research and development, manufacturing. Sales and servic,Dedicated to providing high-quality, high-performance LED applications and solutions for professional channel customers and end-users at home and abroad.

Our products have been widely used both at home and abroad. Since its foundation, we have become one of the best LED product and solution providers in the country through our unremitting efforts and have won the industry's highest recognition

The development of the company so far, the sales outlets throughout the country, the export products exported to more than 10 countries and regions, 3C, FCC, CE,IFA, IP65, IP68, IS9001, ROSH.AAA and other qualifications, product testing reports, patent certificate



Instation:



Our factory:



From : Elena Duan

What'app no :
+8615019269218

SOL COLUR SHENZHEN SOL COLUR DISPLAY CO.,LTD

+86 13751136904

chenhao@sol-colour.com

sol-colour.com

2nd Floor, Building 8, Nangang Third Industrial Zone, TangtouCommunity, Shiyan Street, Bao'an District, Shenzhen