



DIP P10 Outdoor Advertising LED Display 10000 Dot / M2 Density 10-100m View Distance

Our Product Introduction

Basic Information

- Place of Origin: CHINA
- Brand Name: SC
- Certification: 3C,FCC,CE,IAF,IP65,IP68,IS9001,ROSH,AAA
- Model Number: P10 Outdoor SMD LED display
- Minimum Order Quantity: 1 Square Meters / 1 Piece
- Price: USD14.34~27.67/PCS
- Packaging Details: CARTON
- Payment Terms: T/T
- Supply Ability: 5000 Square Meters per Month



Product Specification

- Encapsulation Of Led: DIP346
- Module Max Power Consumption: 15W
- Drive Type: Constant Drive (SUM2016)
- Pixel Density: 10000dots/
- Module Size: 320x160mm
- Brightness Of White Balance: $\geq 7000 \sim 7500 \text{cd/}$
- Cabinets Display Resolution: 96*96DOTS
- Environment Temperature: Storage:-35°C +85°C Working:-20°C +50°C
- Highlight: **10000 Dot Outdoor Advertising LED Display, M2 Density Outdoor Advertising LED Display**



More Images



Product Description

DIP P10 Outdoor Advertising LED Display 10000 Dot / M2 Density 10-100m View Distance

When it comes to LED display screen , Sol Colur is the best for sure .

Specifications of P10mm outdoor DIP			
P10 DIP346 RGB 3in1 full color outdoor diecast display			
Unit Module	Item	Energy-saving	General
	Model Number	SC-P10 (346)-16*16-4S-V1.6	SC-P10 (346)-16*16-4S-V1.6
	pixel pitch	10mm	10mm
	encapsulation of led	DIP346	DIP346
	Mudule Max Power consumption	15W	26W
	Mudule Display Resolution	32DOTS(W) * 16DOTS(H)	32DOTS(W) * 16DOTS(H)
	Drive Type	Constant drive (SUM2016)	Constant drive (SUM2016)
	pixel configuration	1R1G1B DIP	1R1G1B DIP
	pixel density	10000dots/m2	10000dots/m2
	driving mode	1/4 scan constant current	1/4 scan constant current
	module size	320x160mm	320x160mm
	HUB type	HUB75	HUB75
	Weight of a mudule	0.35kgs	0.35kgs
	brightness of white balance	≥7000~7500cd/m2	≥7000~7500cd/m2
	Thickness of a mudule	26mm	26mm
LED Cabinet	Diecast cabinets size	960x960mm	960x960mm
	Module quantity per cabinet	18pcs	18pcs
	Power supply	3.8 V/40A*2pcs	5V V/60A*2pcs
	Maintenance mode	Front or back maintenance	Front or back maintenance
	Thermal discharge	fan 2pcs	fan 2pcs
	Cabinets Display Resolution	96*96DOTS	96*96DOTS
	The best viewing distance	4M~10M	4M~10M
	The best viewing angle	H:110° / W:110°	H:110° / W:110°
	Environment temperature	storage:-35℃ +85℃ working:-20℃ +50℃	storage:-35℃ +85℃ working:-20℃ +50℃
	Operating humidity	10-95% Relative humidity	10-95% Relative humidity
	temperature	100mm	100mm
Power	operating power	AC220V±10%	AC220V±10%
	Average Power consumption	100W/	240W/
	Max.Power consumption	300W/	608W/

	Current	≤20mA(single LED)	≤20mA(single LED)
Control system	Control method	synchronization	synchronization
	Operation system	WIN98/2000/NT/XP/WIN7	WIN98/2000/NT/XP/WIN7
	CPU	Pentium4 or above P4	Pentium4 or above P4
Main Technical parameter	Refresh frequency	≥1920Hz	≥1920Hz
	lifespan	≥100000Hours	≥100000Hours
	Power switch	Automatic switch	Automatic switch
	Grey scale/colors	4096 level/16.7M colors	4096 level/16.7M colors
	Driving device	Constant drive IC	Constant drive IC

Product Description

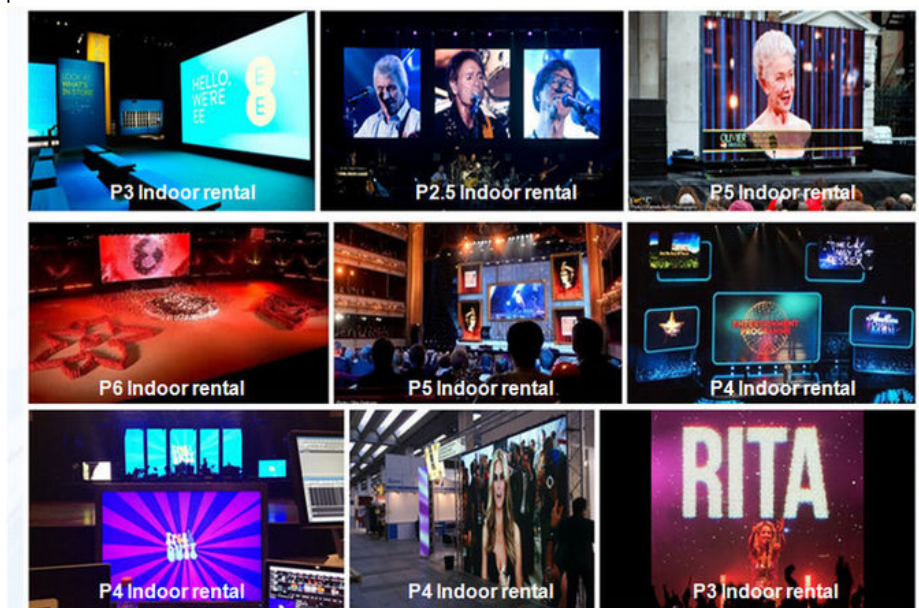
1. With the high quality raw material, mature craft and large scale production, the quality guaranteed Super Wide Viewing Angle With Exquisite Image.
2. High brightness meet the needs of various application environments.
3. Excellent visual effect, better viewing effect for text and graphic or video.
4. With the best LED industrial waterproof and ultraviolet-proof SMD 3 in 1 technology to get a super wide viewing angle and abetter surface flatness and stability. when the screen is used RGB deep gray processing to show colorful and exquisite images.
5. Environmental raw material.

Company information

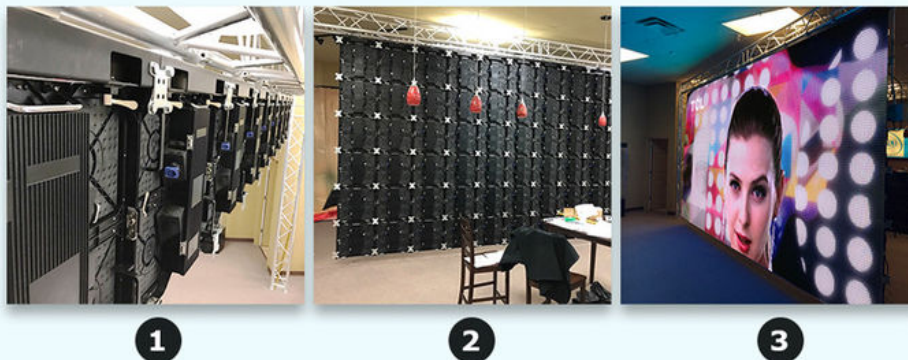
SHENZHEN SOL COLUR DISPLAY CO.,LTD. was established in December 2012,Is a leading LED display applications products and solutions provider,Specialized in LED research and development, manufacturing. Sales and servic,Dedicated to providing high-quality, high-performance LED applications and solutions for professional channel customers and end-users at home and abroad.

Our products have been widely used both at home and abroad. Since its foundation, we have become one of the best LED product and solution providers in the country through our unremitting efforts and have won the industry's highest recognition

The development of the company so far, the sales outlets throughout the country, the export products exported to more than 10 countries and regions, 3C, FCC, CE,IFA, IP65, IP68, IS9001, ROHS.AAA and other qualifications, product testing reports, patent certificate



Instation:



Our factory:



From : Elena Duan

What's app no :
+8615019269218

SOL COLUR SHENZHEN SOL COLUR DISPLAY CO.,LTD

+86 13751136904

chenhao@sol-colour.com

sol-colour.com

2nd Floor, Building 8, Nangang Third Industrial Zone, TangtouCommunity, Shiyan Street, Bao'an District, Shenzhen