



P10 1/8 Scan Indoor Advertising LED Display Full Color Commercial LED Screen

Our Product Introduction

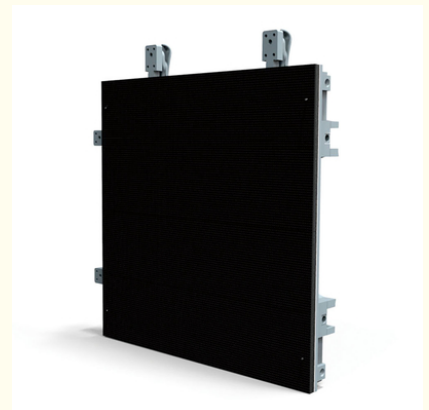
Basic Information

- Place of Origin: SHENZHEN CHINA
- Brand Name: SC
- Certification: CCC IP68 CE
- Model Number: Indoor SMD P10
- Minimum Order Quantity: Square Meters / 1 Piece
- Price: Negotiable
- Packaging Details: Wooden box, Flight Case
- Delivery Time: 10 days after received deposit
- Payment Terms: L/C, D/A, D/P, T/T
- Supply Ability: 5000 Square Meter/Square Meters per Month



Product Specification

- Module Size: 320*160mm
- Brightness: 700-800nits
- Control Method: Synchronization
- Color: 1R1G1B
- Module Number: Indoor SMD P10
- Led Package: SMD 3528
- Warranty: 2 Years
- Pixel Resolution: 32dots(W)*16dots(H)
- Highlight: Indoor Advertising LED Display ,
1/8 Scan Commercial LED screen,
1/8 Scan Indoor Advertising LED Display



Product Description

P10 1 / 8 Scan Module Indoor Advertising LED Display Commercial Full Color LED Billboard

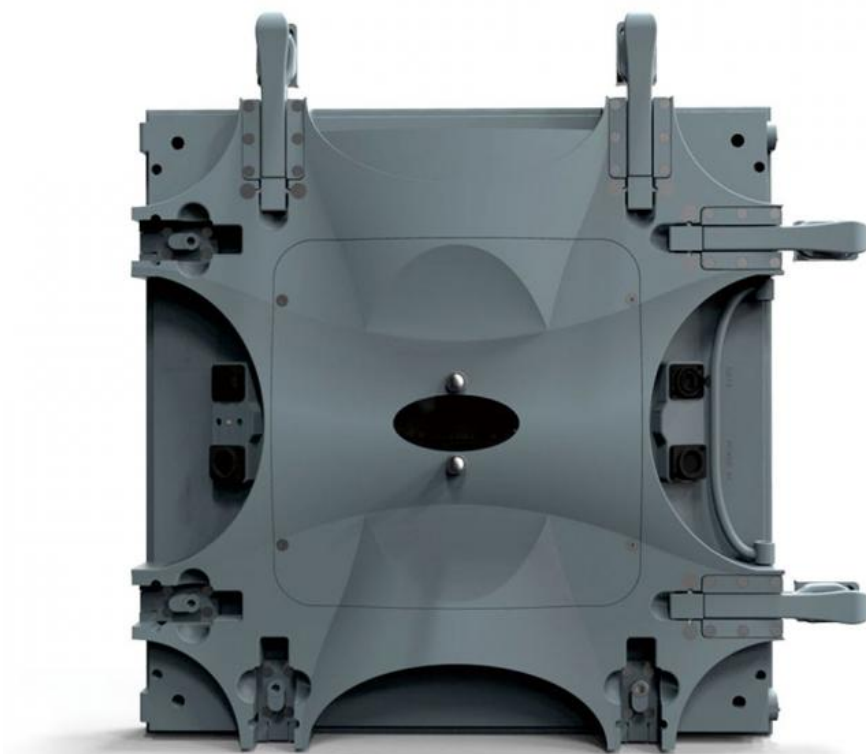
Product Specification:

No	Item	Parameter
1	Cabinet Size	640mm*960mm*80mm
2	Brightness/Adjustment	≥1600cd/m ² , level 16 automatic/level 100 manual operation
3	View Angle	≥120°(Horizontal), ≥120°(Vertical)
4	Best View Distance	10-25m
5	Grey Scale	Within 65536 step
6	Frame Frequency	≥60Hz
7	Refresh Rate	≥1920Hz
8	Signal Input Source	Video, VGA/computer control, video Synchronization, real type display
9	Scan Mode	1/4 scan
10	Drive IC	MBI 5024
11	Module Qty / M ²	19.5
12	Display Color Qty	16777216 color
13	Color Temperature	25000
14	Continuous Working Time	>24(Hrs)
15	Screen Lifespan	>100,000(Hrs)
16	MTBF	>5000(Hrs)
17	Max. power consumption	490W/
18	Ave. power consumption	165W/
19	Out of control pixel rate	≤3/10,000(discrete distribution)
20	Control Distance	100M(Ethernet) 500M(Multi-fiber) 10KM(Single-fiber)
21	Flatness	Screen Surface≤0.5mm, Pixel Pitch≤0.3mm
22	Operation Temperature	-10°C +50°C
23	Working Humidity	10% 98%RH
24	Storage Temperature	-40°C +85°C
25	Software Connection	Standard Computer Connection, Compatible With Windows, Unix, Novell
26	protection system	Overtemperature/overload/power/image compensation/nonlinear correction
27	Working Voltage	200~240 V
28	Dielectric Strength	50HZ/1500V(AC RMS)/1min
29	Temperature Rise	Metal≤40K, Insulation≤65K , After Heat Balance
30	IP Grade	IP43
31	Computer display mode	1024*768
32	Media Player	LED Professional Media Player

Advantage :

- 1 . SMD led encapsulation confirm wide view angle and slim thickness
- 2 . High definition, Good uniformity, low power consumption
- 3 . Can be fixed installation or for rental to meet the request of live broadcast, live meeting, Banquet, party, stage etc
- 4 . Widely used for advertising led display, sport match score board, stage or meeting room background screen

Project Show:



SOL COLUR SHENZHEN SOL COLUR DISPLAY CO.,LTD

+86 13751136904

chenhao@sol-colour.com

sol-colur.com

2nd Floor, Building 8, Nangang Third Industrial Zone, TangtouCommunity, Shiyan Street, Bao'an District, Shenzhen