

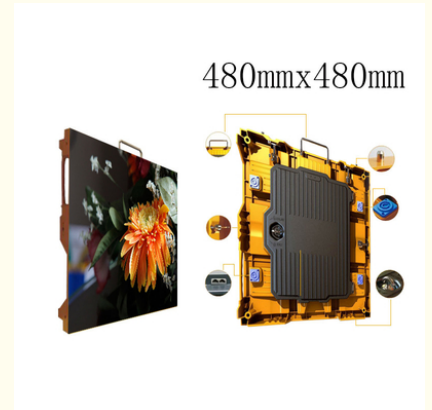


Meeting Room Rgb Indoor Rental Led Screen Pixel Pitch 2.5mm 3840HZ Refresh Rate

Our Product Introduction

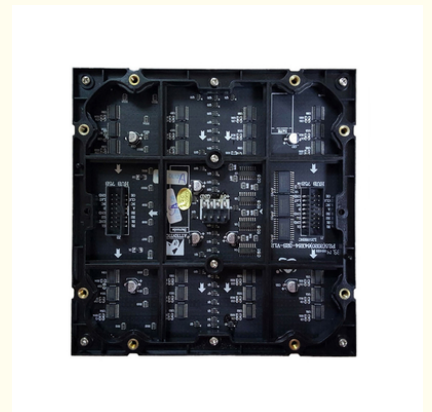
Basic Information

- Place of Origin: SHENZHEN
- Brand Name: SC
- Certification: CE,3C,FCC,ROSH
- Model Number: P2.5 Indoor
- Minimum Order Quantity: 1 Square Meters
- Price: Negotiable
- Packaging Details: Wooden box,Flight Case
- Delivery Time: 10 days after received deposit
- Payment Terms: L/C, D/A, D/P, T/T, Western Union
- Supply Ability: 5000 Square Meter/Square Meters per Month

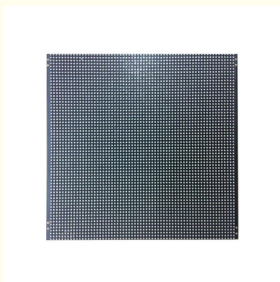


Product Specification

- Color: Full Color
- Brightness: 900-1200 Nits
- Warranty: 2 Years
- Certificate: CE,3C,FCC,ROSH
- Uasge: Indoor
- Driver IC: MBI5124
- Package Mode: SMD Nationstar
- Scan Mode: 32S



More Images



for more products please visit us on sol-colur.com

Product Description

P2.5 Indoor Die Casting aluminum display screen P2.5 led video wall indoor SMD 3in 1 rgb led display

Product Quick Details:

A, Pixel pitch: 2.5mm

B, IC: MBI5153

C, Refresh rate: 3840HZ

D, Brightness: 800CD

Product Features:

1, High refresh rate 3840HZ, MBI 5153 is used, remove ghost without trailing, could meet high-end demands of clients, such as TV studio.

2, High quality SMD 1010 with low failure is used, it has a great performance in stability, lowest light malfunction, great color consistence as well as heat dissipation.

3, High grey scale under low brightness: The high quality full black leds, together with black mask, achieves clear and crystal picture.

4, Support single pixel color brightness calibration and single color brightness calibration, ensures higher color uniformity and higher brightness uniformity of each screen.

Parameter

*Specifications of LED modules		
Technical parameters	UNIT	Parameters values
Pixel pitch	MM	2.5
Panel size	MM	L160*H160*T13
Physical density	/M ²	160000
Pixel configuration	R/G/B	1,1,1
Driving method		1/32 Constant current 1/32scan
LED Encapsulation	SMD	2121
Display resolution	DOTS	64X64=4096
Module weight	KG	0.19
Module port		HUB-HD01
Module working voltage	VDC	5
Module consumption	W	35
*Specifications of cabinet		
Cabinet size	mm	480*480
Cabinet weight	kg	5
Cabinet resolution	dots	192*192
Viewing angle	Deg.	140°
Option distance	M	2-30
Driving device		2016/5020
Every square meter module	PCS	39.06
Maximum power	W/ M ²	1400
Frame Frequency	HZ/S	≥60
Refresh frequency	HZ/S	≥320
Equilibrium brightness	CD/ M ²	≥1500
Working environment temperature	°C	-10~60
Working environment humidity	RH	10% 70%
Display working voltage	VAC	AC46 54HZ, 220V±15%/110V±15%
Color temperature		8500K-11500K
Gray scale/color		≥16.7M color
Input signal		RF S-Video RGB etc
Control system		PCTV nonlinearity card, DVI display card, Linsn control system
Mean free error time	HOURS	5000
Life	HOURS	100000
Lamp failure frequency		0.0001
Antijam		IEC801
Safety		GB4793
Resist the electricity		1500V last 1min No breakdown
Steel box weight	KG/ M ²	40(standard steel box)
Earth leakage current	mA	
IP rating		The back IP40, The front IP50

Steel box size	mm	L640Xh640x80

Aging test



SOL COLUR SHENZHEN SOL COLUR DISPLAY CO.,LTD

+86 13751136904

chenhao@sol-colour.com

sol-colour.com

2nd Floor, Building 8, Nangang Third Industrial Zone, TangtouCommunity, Shiyan Street, Bao'an District, Shenzhen