



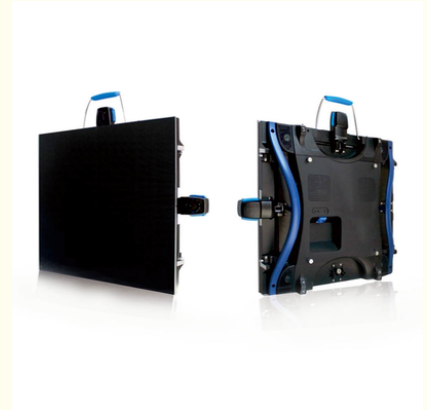
16 Scan Indoor LED Video Wall P5mm Led Screen For Home Theater

Our Product Introduction

for more products please visit us on sol-colur.com

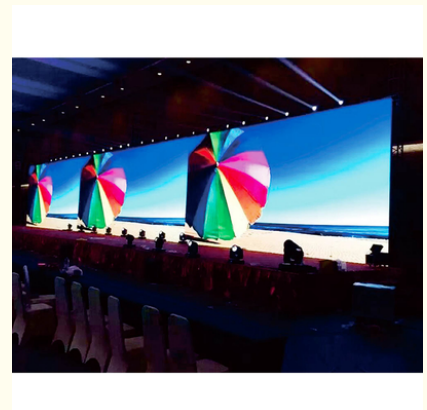
Basic Information

- Place of Origin: SHENZHEN CHINA
- Brand Name: SC
- Certification: CCC IP68 CE ISO9001 ROSH
- Model Number: Indoor SMD P5
- Minimum Order Quantity: Square Meters / 1 Piece
- Price: Negotiable
- Packaging Details: Wooden box, Flight Case
- Delivery Time: 10 days after received deposit
- Payment Terms: L/C, D/A, D/P, T/T
- Supply Ability: 5000 Square Meter/Square Meters per Month



Product Specification

- Usage: Indoor
- Module Scan: 16 Scan
- Cabinet Size: 960mm*960mm
- Color: Full COLOR
- Pixel Pitch: P5mm
- Module Size: 320*160mm
- Drive Type: Constant Drive
- Max Power: 25w
- Warranty: 2 Years
- Highlight: P5mm Led Screen For Home Theater ,
16 Scan Indoor LED Video Wall ,
P5mm Indoor LED Video Wall



More Images



Product Description

Soled Color Pixel Indoor Full Color LED Display 960mm * 960mm For Movie Theaters

SHENZHEN SOL COLUR DISPLAY CO.,LTD. was established in December 2012,Is a leading LED display applications products and solutions provider,Specialized in LED research and development, manufacturing. Sales and service,Dedicated to providing high-quality, high-performance LED applications and solutions for professional channel customers and end-users at home and abroad.

Our products have been widely used both at home and abroad. Since its foundation, we have become one of the best LED product and solution providers in the country through our unremitting efforts and have won the industry's highest recognition The development of the company so far, the sales outlets throughout the country, the export products exported to more than 10 countries and regions, 3C, FCC, CE,IFA, IP65, IP68, IS9001, ROHS.AAA and other qualifications, product testing reports, patent certificate

We produce indoor,outdoor and rental led module and led diplay

P1.25/P1.388/P1.5625/P1.667/P1.875/P1.923/P2/P2.5/P3/P4/P5

P7.62/P6/P8/P10/P12/P16/P3.91/P4.81/P5.95/P2.976

All can be customized

PARAMETERS:

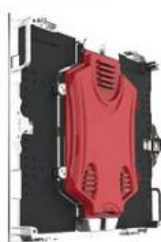
ItemS	Parameter
Unit Module	Model Number
	HX-P5-16S
	Module size
	320mm*160mm
	Pixel pitch
	5mm
	Pixels Density
	40000/m2
	Pixel configuration
	1R1G1B
	Package mode
	Nation Star SMD2121
	Pixel resolution
	32dots(W)*32 dots (H)
Cabinet	Max Power
	25W
	Weight
	0.21kg
	Drive type
	Constant drive
	Scan mode
	1/16scan
	Port type
	HUB75-A
Power	Brightness of white balance
	≥1600cd/m2
	Dimension
	640mm*640mm
	Monomer Module Number
	16pcs
	Power supply
	5V/40A*2pcs
	Thermal discharge
	fan 2pcs
Control system	Pixel per cabinet
	128*128
	Best viewing distance
	5M 20M
Main technical parameter	Best viewing angle
	110°(W) 110°(H)
	Temperature
	storage:-35°C +85°C
	working:-20°C +50°C
	Relative humidity
	10%-95%
Working voltage	Thickness
	85mm
	Working voltage
	AC110 220V±10%
Average Power consumption	Average Power consumption
	<500W/
	Max.Power consumption
	<1080W/
Current	Current
	<20mA(single LED)
	CPU
	Pentium4 or above P4
Operation system	Operation system
	WIN98/2000/NT/XP/WIN7
	Control method
	Synchronization
Driving device	Driving device
	Constant drive IC
	Refresh frequency
	>1080HZ
Grey scale/colors	Grey scale/colors
	4096gray level/16.7M colors
	MTBF
	>9000hours
Power switch	Power switch
	Automatic switch

Company Information:



LED Display Units Are Stitched Together To Achieve Seamless Good Screen. Choose High-quality Mask With Excellent Protection Function.

High Screen Refresh Rate; No Flicker; Jitter-free; Dynamic Screen Without Dragging Tail; Camera Photographic Screen Without Ripple.



Display a Positive Balance; High Color Reproduction Degree; Delicate Screen; Ensure Realistic Images.



Why Choose us?

We have a perfect service system, including pre-sale service, in-sale service and after-sale service. To provide high quality service for our customers, we train every salesman with necessary product maintenance knowledge and organized a Technology Supporting Department with a group of excellent and professional engineers. Any problem you can contact us at any time you like.

Pre-sale service:

1. Reply enquiries in 24 hours.
2. Market research and forecast for customer.
3. Provide unique and professional solutions based on customer's requirement.
4. Data sheet and samples offer.
5. Other services, such as special packing design, factory visiting and so on.

In-sale service:

1. Tracking report in producing.
2. Quality test report for every order.
3. Photos and videos as per customer's requirement.
4. Free spare parts.

After-sale service:

1. Lifetime free maintenance and upgrade.
2. Complaint respond period not exceed 24 hours; maintenance guidance and problem solution supplied in 48 hours.
3. Customer satisfaction tracking report.
4. Free technician training.
5. Full set of documents free of charge, which including installation guidance, software operation manual, easy maintenance manual and control system software CD and so on.
6. Special service for big project, such as stadium, exhibitions, squares and so on.

FAQ

Q1: When is the delivery time?

A1: we will accomplish manufacturing within 10 days after receiving the deposit.

Q2: What is the payment method?

A2: We support a variety of payment methods, the most common is the TT.

Q3: What's the pixel pitch for Outdoor LED Display Screen?

A3: Outdoor (P6mm / P8mm/P10mm)

Q4: Where is it used for?

A4: Outdoor & rental use. Widely used for backdrop of staging event, rental business, live show, concert, etc.

Q5: Can it play HD video?

A5: Yes, it can realize HD video function with Linsn controlling system.

Q6: What's the controlling system?

A6: Our standard controlling system for this model is Linsn, Novastar. Also support other controlling system, like Xixun, TF, Colorlight, etc.

Q7: How about the size of project?

A7: Please offer the size with "width by height" of project. We will offer the suitable solution for your project size. I will appreciate it if any drawing files about installation offered.

Q8: How about your service?

A8:

1. Lifetime free maintenance and upgrade.
2. Complaint respond period not exceed 24 hours; maintenance guidance and problem solution supplied in 48 hours.
3. Customer satisfaction tracking report.
4. Free technician training.
5. Full set of documents free of charge, which including installation guidance, software operation manual, easy maintenance manual and control system software CD and so on.
6. Special service for big project, such as stadium, exhibitions, squares and so on.

