

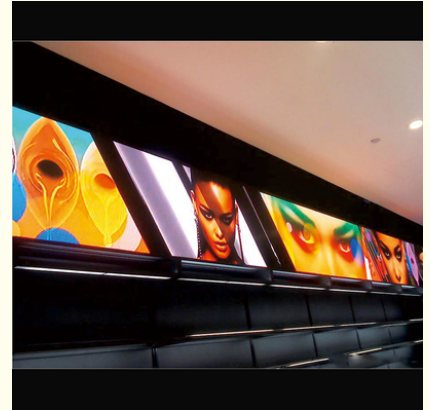


Small P2 Indoor LED Video Wall High Resolution Home Theatre Led Screen

Our Product Introduction

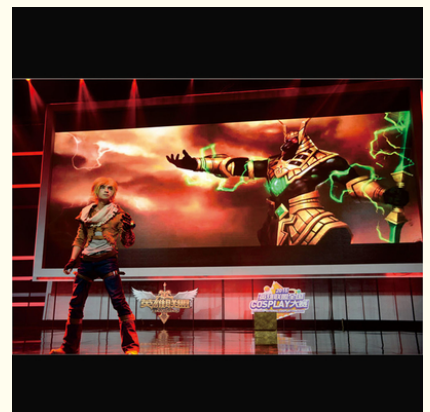
Basic Information

- Place of Origin: SHENZHEN CHINA
- Brand Name: SC
- Certification: CCC IP68 CE ISO9001 ROHS
- Model Number: SMDP2
- Minimum Order Quantity: Square Meters / 1 Piece
- Price: Negotiable
- Packaging Details: Wooden box, Flight Case
- Delivery Time: 10 days after received deposit
- Payment Terms: L/C, D/A, D/P, T/T
- Supply Ability: 5000 Square Meter/Square Meters per Month



Product Specification

- Best Viewing Angle: 2m~10
- Pixel Pitch: 2mm
- Module Size: 256mm*128mm
- Color: Full COLOR
- Max Power: 20w
- Pixel Configuration: 1R1G1B
- Led Lamp: SMD1010
- IP: IP45
- Highlight: Small P2 Indoor LED Video Wall,
Movie Theaters Indoor LED Video Wall,
High Resolution Home Theatre Led Screen



Product Description

Small P2 Indoor Full Color LED Display Screens High Resolution For Movie Theaters

Description :

Indoor LED screens and indoor LED displays are widely used as screens for the use of LED video walls, or for indoor concerts. It can also be used as screens for movie theaters, cinemas and auto-cinemas, like the mega IMAX theater screens. These types of electronic LED screens are always very high quality and the resolution is much higher than a normal outdoor electronic LED display screen. However, because the quality of indoor LED display screens for the interior are much higher, the price per square meter is also much more than a normal outdoor LED display screen.

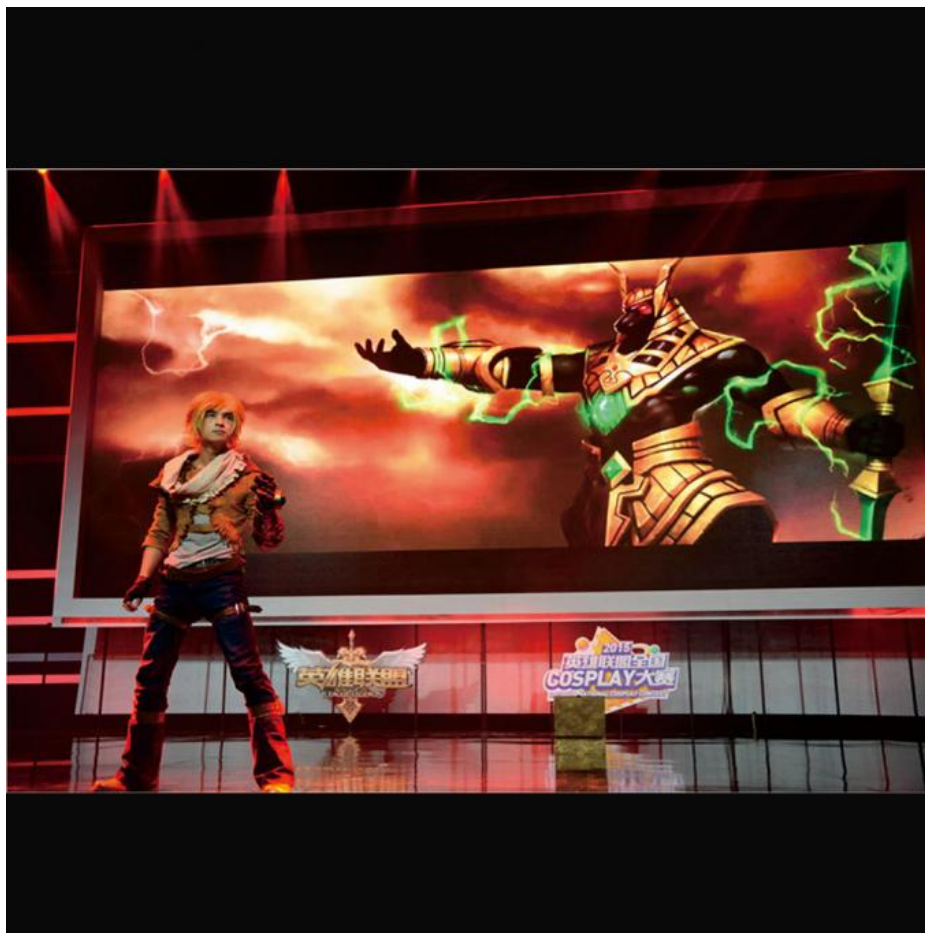
Characteristics

1. High intensity and can be adjusted, so can meet the request of the customers according the application environment.
2. Best equality, commendably solve the problem of the mosaic, have the excellent consistency of light.
3. To pictures and character, have clear, exquisite and real display effect.
4. Big viewing angle to 160 degree at horizontal line, 120 degree at vertical line, you can see at every angle at this range, no picture change, no color excursion.
5. Can repair each led lamps, so the cost of maintain is lower, and easy to repair.

What is the parameters of our led display?

Pixel pitch		P2	
Module Parameters	Pixel pitch	2 mm	
	Pixel Density	250000 pixels/m2	
	LED Shape	SMD 3in1	
	LED Configuration	1R1G1B	
	Module Resolution	128*64 pixel	
	Module Size	256*128	
	Drive Method	1/24,1/32	
Cabinet Parameters	Cabinet Resoltuion	256*256	
	Cabinet Size	512*512 mm	
	Cabinet Weight	8.5kg±0.05 kg	
Display Parameters	Optical	Brightness	≥1500 cd/m2
		Viewing angle	H/V 160/160
		Best Viewing Distance	2-15 m
		Display Color	16.7 million
		Grey Scale	10bits/1024levels
	Power	Max power consumption	1000 W/m2
		Ave power consumption	500 W/m2
		Working Voltage	220V / 110V
	Control system	Frame Frequency	60--85 HZ
		Refresh Rate	≥1920 HZ
		Data Transmission	CAT 5/ Optic Fiber
		Image Source	S-Video, PAL/ NTSC
		Controlling system	linsn, Nova, Mooncell
		Format	Video Compatibility DVI, VGA, composite
	Reliability	Working Temperature	-20-50 °C
		Working Humidity	10-90% RH
		Life Span	100,000 Hours
		MTBF (Ave No Failure Time)	5000 Hours
		Pixel failing Rate	0.01%
		IP Rate	IP 54

Project Show:



SOL COLUR SHENZHEN SOL COLUR DISPLAY CO.,LTD

+86 13751136904

chenhao@sol-colour.com

sol-colur.com

2nd Floor, Building 8, Nangang Third Industrial Zone, TangtouCommunity, Shiyan Street, Bao'an District, Shenzhen