



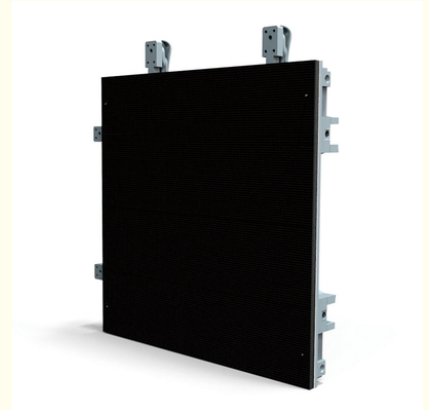
Stage P4.81 Outdoor Advertising LED Display Screen , SMD 1921 LED Display Screen Rental

Our Product Introduction

for more products please visit us on sol-colur.com

Basic Information

- Place of Origin: SHENZHEN CHIAN
- Brand Name: SC
- Certification: CCC, ISO14001, CE, IP65
- Model Number: P3.91
- Minimum Order Quantity: Square Meters / 1 Piece
- Price: Negotiable
- Packaging Details: Wooden box, Flight Case
- Delivery Time: 10 days after received deposit
- Payment Terms: L/C, D/A, D/P, T/T, Western Union, MoneyGram
- Supply Ability: 5000 Square Meter/Square Meters per Month

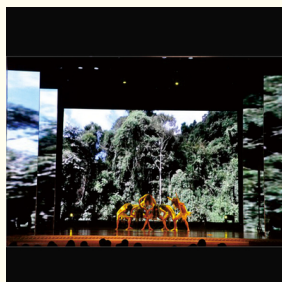


Product Specification

- Pixel Pitch: 3.91
- CABINET: 500mm*500mm
- Scan Mode: 16 Scan
- Pixel Configuration: Full Color
- LED Lamp: SMD 1921
- IC: MBI5124
- Refresh Frequency: 1920HZ
- Brand Name: SOL COLUR



More Images



Product Description

Factory Direct Sale, Stage rental P3.91,P4.81, 500mm x 500mm, High image, Good quality Indoor Outdoor led display

Product Features:

1. Front or rear maintenance, modules and control box can be installed and maintained from either front or rear.
 2. Protection level IP65, is full waterproof, dustproof, anti-corrosion and anti-ultraviolet, enable themselves to work in all weather conditions to guarantee durability, reliability and steady.
 3. There are handles on modules and cabinets, much more convenient for assemble, disassemble and moving.
 4. LCD displays on back of cabinet could show working condition of each panel, including temperature, voltage, single using time, accumulated using time and DVI signal.
 5. Alignment hole and location pin design for installation could achieve extreme precision between cabinets, besides module shaping one time, get seamless splicing and assemble easier.
 6. Cabinet size is 500*500mm, and weight is only 8kg/pc, very light and slim, convenient in transporting and and installation, thus save labor cost and avoid wasting much time, very suitable for flow shows and rents.
- Fanless design, excellent natural heat dissipation achieves zero noise, providing quiet working environment, best choice for indoor rental events.
- High refresh rate, high grey scale level and high accurate color consistency guarantee the vivid pictures and perfect videos.

Applications:

This kind of LED 1R1G1B full color led display is applied for displaying advertising, city beautifying, information publicity, great concerns and relative activities.

Product Specification:

Unit Module	Item	Parameter
	Model Number	HX-P3.91-16S
	Module size	250mm*250mm
	Pixel pitch	3.91mm
	Pixels Density	65536/m2
	Pixel configuration	1R1G1B
	Package mode	SMD1921
	Pixel resolution	64dots(W)*64 dots(H)
	Max Power	38W
	Module weight	0.7kg
	Drive type	Constant drive
	Scan mode	1/16scan
	Port type	HUB75-A
	Brightness of white balance	≥4800cd/m2
Cabinet	Dimension	500mm*500mm
	Monomer Module Number	4pas
	Power supply	5V/40A*1pas
	Protection grade	IP65
	Pixel per cabinet	128mm*128mm
	Best viewing distance	2M 18M
	Best viewing angle	160°(W) 120°(H)
	Temperature	storage:-35°C +85°C working:-20°C +50°C
	Relative humidity	10%-95%
Power	Thickness	65m
	Working voltage	AC220V±10%
	Average Power consumption	320W/
	Max.Power consumption	≤800W/
Control system	Current	≤20mA(single LED)
	CPU	Pentium4 or above P4
	Operation system	WIN98/2000/NT/XP/WIN7

Product Case:



SOL COLUR SHENZHEN SOL COLUR DISPLAY CO.,LTD

+86 13751136904

chenhao@sol-colour.com

sol-colur.com

2nd Floor, Building 8, Nangang Third Industrial Zone, TangtouCommunity, Shiyan Street, Bao'an District, Shenzhen